



T20

*The Unified Medical Language System (UMLS):
What Is It and How to Use It?*

Olivier Bodenreider, Jan Willis, and William Hole
U.S. National Library of Medicine

Wednesday, 8 September
08.30 - 12.00
Union Square 17 & 18



Tutorial T20
September 8, 2004



The Unified Medical Language System

What is it and how to use it?



Olivier Bodenreider

Jan Willis

William Hole

Acknowledgements

◆ Thanks to NLM Staff and Contractors who contributed to this presentation

- Kin Wah Fung
- Betsy Humphreys
- Rachel Kleinsorge
- Suresh Srinivasan
- Karen Thorn
- Carolyn B. Tilley



Outline

- ◆ What is the UMLS?
- ◆ How to use the UMLS?
 - Obtaining a license
 - Remote access
 - Knowledge Source Server (UMLSKS)
 - UMLSKS Application programming interface (API)
 - Local installation and customization (MetamorphoSys)
- ◆ Questions



3

Part I What is the UMLS?

Outline

◆ Part I: *What is the UMLS?*

- Introduction
- Overview through an example
- The three UMLS Knowledge Sources
 - UMLS Metathesaurus
 - UMLS Semantic Network
 - SPECIALIST Lexicon and lexical tools



5

Part I
What is the UMLS?
(1) Introduction

What does UMLS stand for?

- ◆ Unified
- ◆ Medical
- ◆ Language
- ◆ System



UMLS®
Unified Medical Language System®
UMLS Metathesaurus®



7

Motivation

[Lindberg & al., *Methods*, 1993]

[Humphreys & al., *JAMIA*, 1998]

- ◆ Started in 1986
- ◆ National Library of Medicine
- ◆ “Long-term R&D project”
- ◆ Complementary to IAIMS

(Integrated Academic
Information Management Systems)

«[...] the UMLS project is an effort to overcome two significant barriers to effective retrieval of machine-readable information.

- The first is the variety of ways the same concepts are expressed in different machine-readable sources and by different people.
- The second is the distribution of useful information among many disparate databases and systems.»



8

The UMLS in practice

◆ Database

- Series of relational files

◆ Interfaces

- Web interface: Knowledge Source Server (UMLSKS)
- Application programming interfaces (Java and XML-based)

◆ Applications

- lvg (lexical programs)
- MetamorphoSys (installation and customization)



The UMLS is *not* an end-user application

9

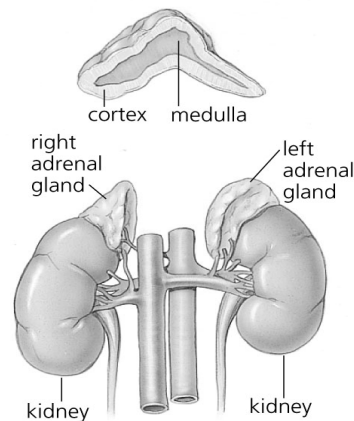
Part I

What is the UMLS?

(2) Overview through an example

Addison's disease

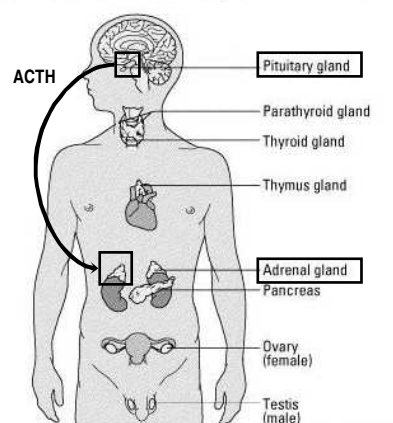
- ◆ Addison's disease is a rare endocrine disorder
- ◆ Addison's disease occurs when the adrenal glands do not produce enough of the hormone cortisol
- ◆ For this reason, the disease is sometimes called chronic adrenal insufficiency, or hypocortisolism



11

Adrenal insufficiency Clinical variants

- ◆ Primary / Secondary
 - Primary: lesion of the adrenal glands themselves
 - Secondary: inadequate secretion of ACTH by the pituitary gland
- ◆ Acute / Chronic
- ◆ Isolated / Polyendocrine deficiency syndrome



adam.com



12

Addison's disease: Symptoms

- ◆ Fatigue
- ◆ Weakness
- ◆ Low blood pressure
- ◆ Pigmentation of the skin (exposed and non-exposed parts of the body)
- ◆ ...



13

AD in medical vocabularies

◆ Synonyms: different terms

- | | | |
|--|---|----------------------|
| ● Addisonian syndrome | } | eponym |
| ● Bronzed disease | | |
| ● Addison melanoderma | } | symptoms |
| ● Asthenia pigmentosa | | |
| ● Primary adrenal deficiency | } | clinical
variants |
| ● Primary adrenal insufficiency | | |
| ● Primary adrenocortical insufficiency | | |
| ● Chronic adrenocortical insufficiency | | |

◆ Contexts: different hierarchies



14

Organize terms

- ◆ Synonymous terms clustered into a concept
- ◆ Preferred term
- ◆ Unique identifier (CUI)

Adrenal gland diseases	MeSH	D000307
Adrenal disorder	AOD	0000005418
Disorder of adrenal gland	Read	C15z.
Diseases of the adrenal glands	SNOMED	DB-70000

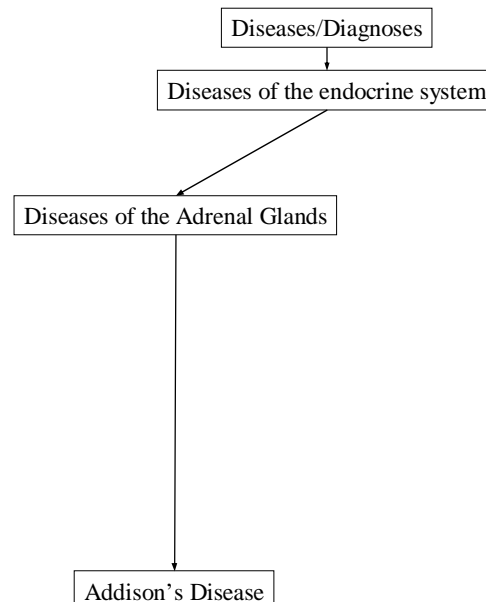
C0001621

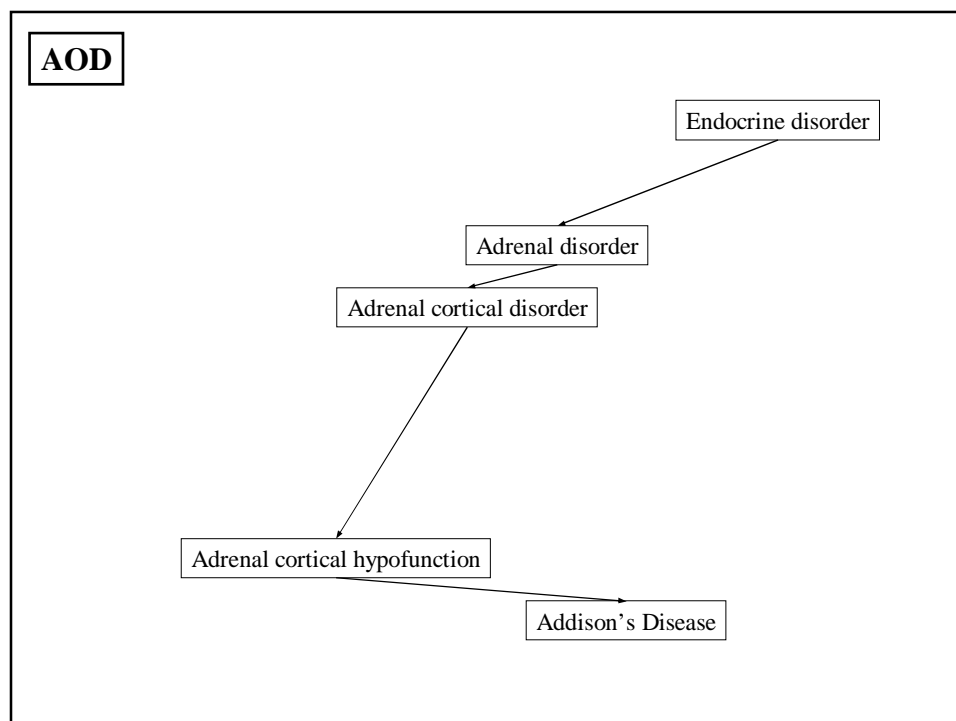
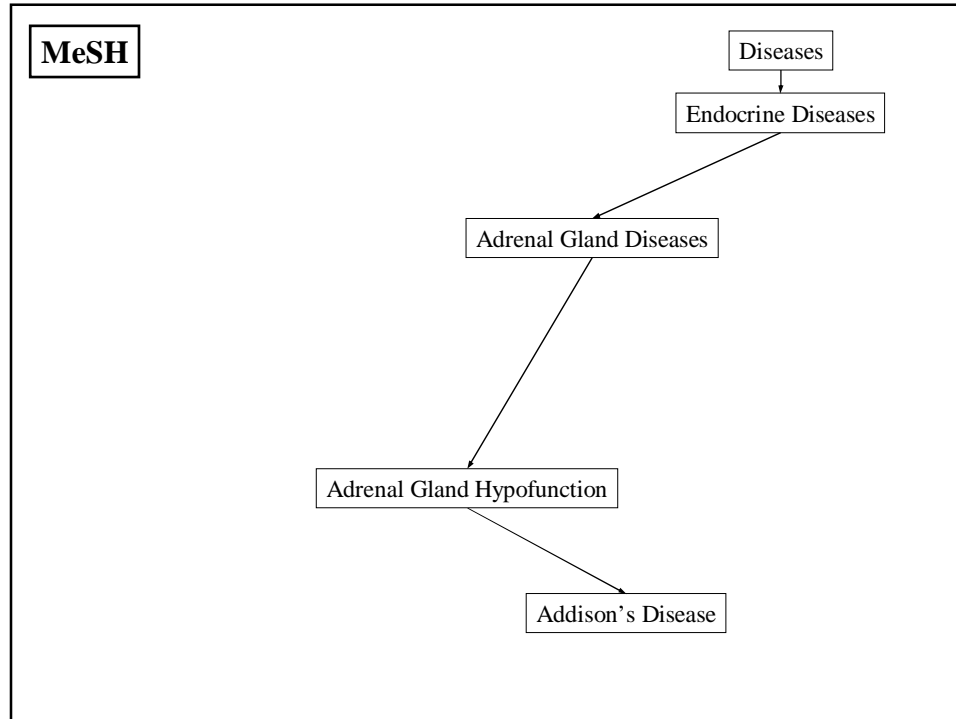
Adrenal Gland Diseases

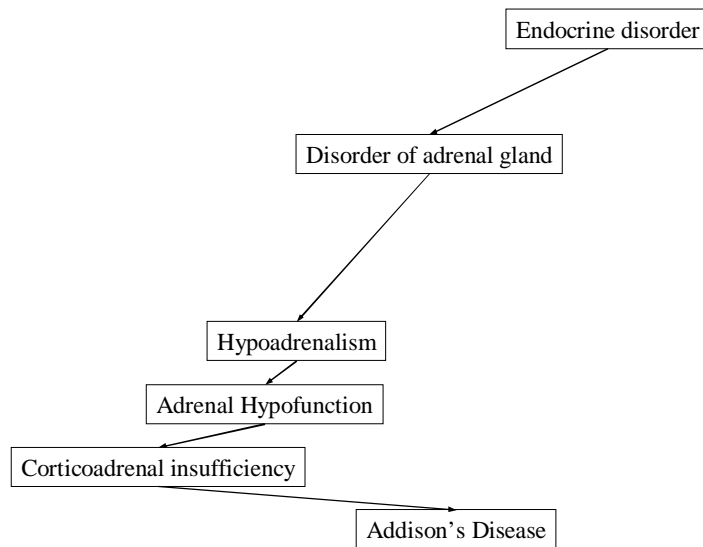
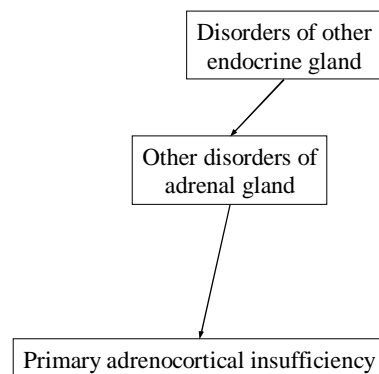


15

SNOMED International

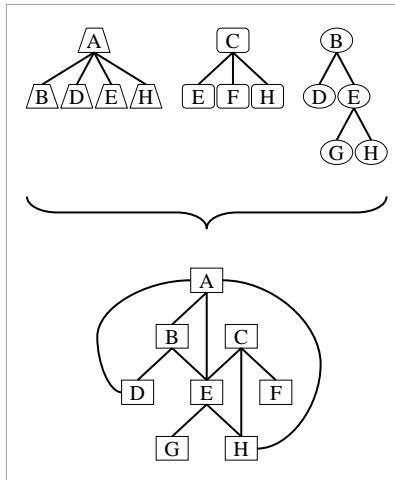




Read Codes**ICD-10**

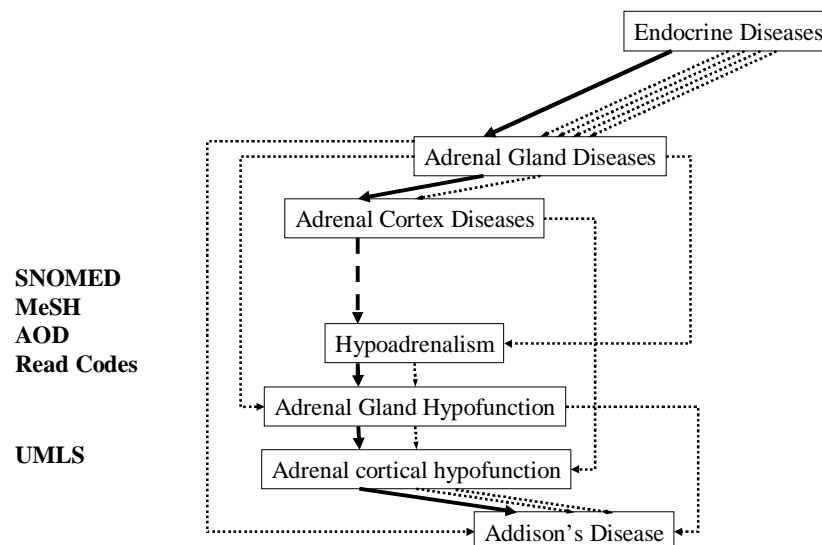
Organize concepts

- ◆ Inter-concept relationships: hierarchies from the source vocabularies
- ◆ Redundancy: multiple paths
- ◆ One graph instead of multiple trees (multiple inheritance)



21

organize concepts

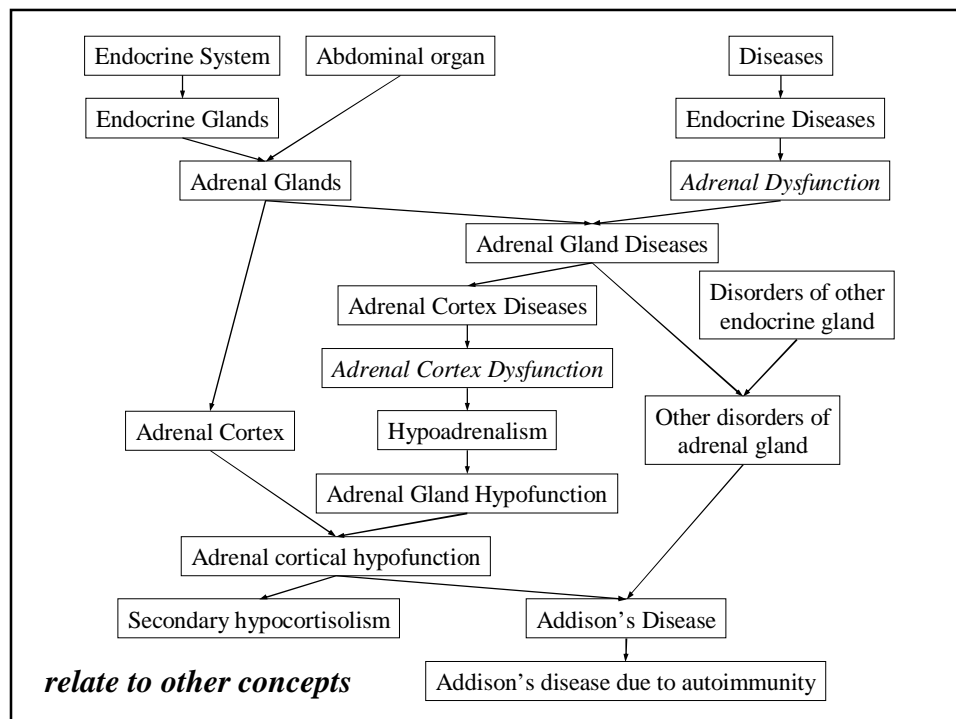


Relate to other concepts

- ◆ Additional hierarchical relationships
 - link to other trees
 - make relationships explicit
- ◆ Non-hierarchical relationships
- ◆ Co-occurring concepts
- ◆ Mapping relationships

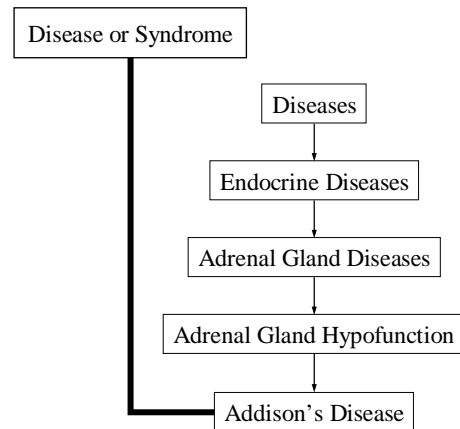


23



Categorize concepts

- ◆ High-level categories (semantic types)
- ◆ Assigned by the Metathesaurus editors
- ◆ Independently of the hierarchies in which these concepts are located



25

How do they do that?

- ◆ Lexical knowledge
- ◆ Semantic pre-processing
- ◆ UMLS editors



26

Lexical knowledge

Adrenal gland diseases
Adrenal disorder
Disorder of adrenal gland
Diseases of the adrenal glands
C0001621



27

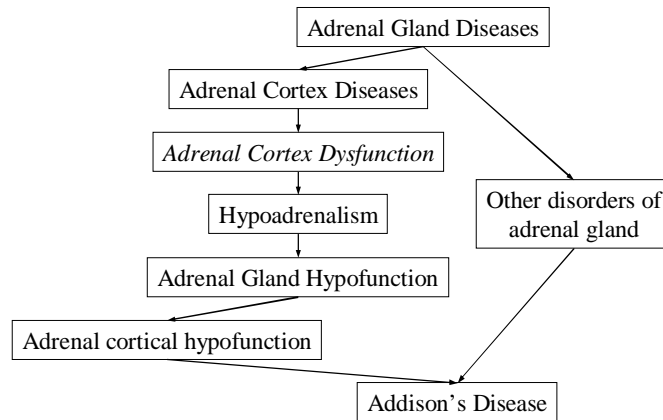
Semantic pre-processing

- ◆ Metadata in the source vocabularies
- ◆ Tentative categorization
- ◆ Positive (or negative) evidence for tentative synonymy relations based on lexical features



28

Additional knowledge: UMLS editors



29

UMLS Summary

- ◆ Synonymous terms clustered into concepts
- ◆ Unique identifier

- ◆ Finer granularity
- ◆ Broader scope
- ◆ Additional hierarchical relationships
- ◆ Semantic categorization



30

Part I

What is the UMLS?

(3) UMLS Knowledge Sources

UMLS 3 components

- ◆ Metathesaurus
 - Concepts
 - Inter-concept relationships
- ◆ Semantic Network
 - Semantic types
 - Semantic network relationships
- ◆ Lexical resources
 - SPECIALIST Lexicon
 - Lexical tools



UMLS Metathesaurus

Metathesaurus Basic organization

◆ Concepts

- Synonymous terms are clustered into a concept
- Properties are attached to concepts, e.g.,
 - Unique identifier
 - Definition

◆ Relations

- Concepts are related to other concepts
- Properties are attached to relations, e.g.,
 - Type of relationship
 - Source



Source Vocabularies

(2004AB)

- ◆ 134 source vocabularies
 - 126 contributing concept names
- ◆ 73 families of vocabularies
 - multiple translations (e.g., MeSH, ICPC, ICD-10)
 - variants (American-English equivalents, Australian extension/adaptation)
 - subsequent editions usually considered distinct families (ICD: 9-10; DSM: IIIR-IV)
- ◆ Broad coverage of biomedicine
- ◆ Common presentation



35

Biomedical terminologies

- ◆ General vocabularies
 - anatomy (UWDA, Neuronames)
 - drugs (RxNorm, First DataBank, Micromedex)
 - medical devices (UMD, SPN)
- ◆ Several perspectives
 - clinical terms (SNOMED CT)
 - information sciences (MeSH, CRISP)
 - administrative terminologies (ICD-9-CM, CPT-4)
 - data exchange terminologies (HL7, LOINC)



36

Biomedical terminologies (cont'd)

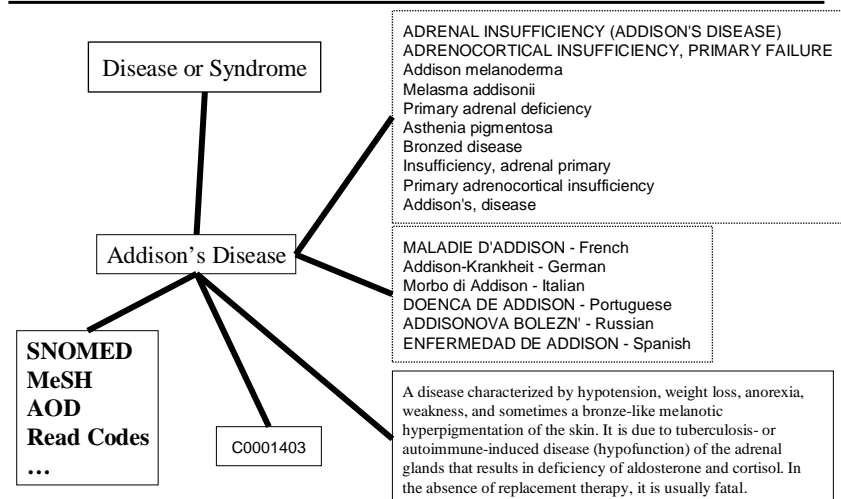
- ◆ Specialized vocabularies
 - nursing (NIC, NOC, NANDA, Omaha, PCDS)
 - dentistry (CDT)
 - oncology (PDQ)
 - psychiatry (DSM, APA)
 - adverse reactions (COSTART, WHO ART)
 - primary care (ICPC)
- ◆ Terminology of knowledge bases (AI/Rheum, DXplain, QMR)



The UMLS serves as a vehicle for the regulatory standards (HIPAA, CHI)

37

Addison's Disease: Concept



38

Metathesaurus Concepts

(2004AB)

- ◆ Concept (> 1M) CUI
 - Set of synonymous concept names
- ◆ Term (> 3.8 M) LUI
 - Set of normalized names
- ◆ String (> 4.3M) SUI
 - Distinct concept name
- ◆ Atom (> 5.1M) AUI
 - Concept name in a given source



A0000001	headache	(source 1)
A0000002	headache	(source 2)
S0000001		
A0000003	Headache	(source 1)
A0000004	Headache	(source 2)
S0000002		
L0000001		
A0000005	Cephalgia	(source 1)
S0000003		
L0000002		
C0000001		

39

Cluster of synonymous terms

 Concept
C0001621

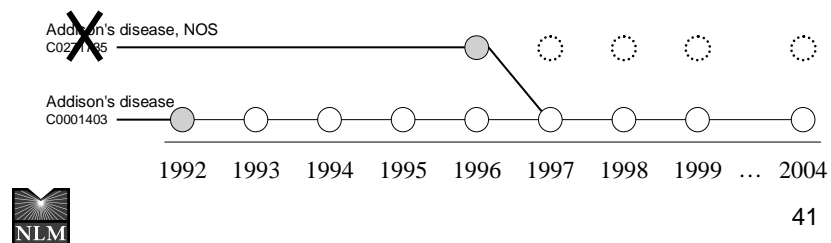
Term L0001621	S0011232 Adrenal Gland Diseases S0011231 Adrenal Gland Disease S0000441 Disease of adrenal gland S0481705 Disease of adrenal gland, NOS S0220090 Disease, adrenal gland S0044801 Gland Disease, Adrenal	[...]
Term L0041793	S0860744 Disorder of adrenal gland, unspecified S0217833 Unspecified disorder of adrenal glands	
Term L0161347	S0225481 ADRENAL DISORDER S0627685 DISORDER ADRENAL (NOS)	[...]
Term L0181041	S0632950 Disorder of adrenal gland S0354509 Adrenal Gland Disorders	[...]
Term L0368399	S0586222 Adrenal disease S0466921 ADRENAL DISEASE, NOS	[...]
Term L1279026	S1520972 Nebennierenkrankheiten	GER
Term L0162317	S0226798 SURRENALE, MALADIES	FRE



40

Metathesaurus Evolution over time

- ◆ Concepts never die (in principle)
 - CUIs are permanent identifiers
- ◆ What happens when they do die (in reality)?
 - Concepts can merge or split
 - Resulting in new concepts and deletions



41

Metathesaurus Relationships

- ◆ Symbolic relations: ~9 M pairs of concepts
- ◆ Statistical relations : ~7 M pairs of concepts (co-occurring concepts)
- ◆ Mapping relations: 100,000 pairs of concepts

-
- ◆ Categorization: Relationships between concepts and semantic types from the Semantic Network



42

Symbolic relations

◆ Relation

- Pair of “atom” identifiers
- Type
- Attribute (if any)
- List of sources (for type and attribute)

◆ Semantics of the relationship: defined by its type [and attribute]

Source transparency: the information
is recorded at the “atom” level

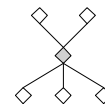


43

Symbolic relationships Type

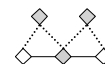
◆ Hierarchical

- Parent / Child **PAR/CHD**
- Broader / Narrower than **RB/RN**



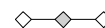
◆ Derived from hierarchies

- Siblings (children of parents) **SIB**



◆ Associative

- Other **RO**



◆ Various flavors of near-synonymy

- Similar **RL**
- Source asserted synonymy **SY**
- Possible synonymy **RQ**



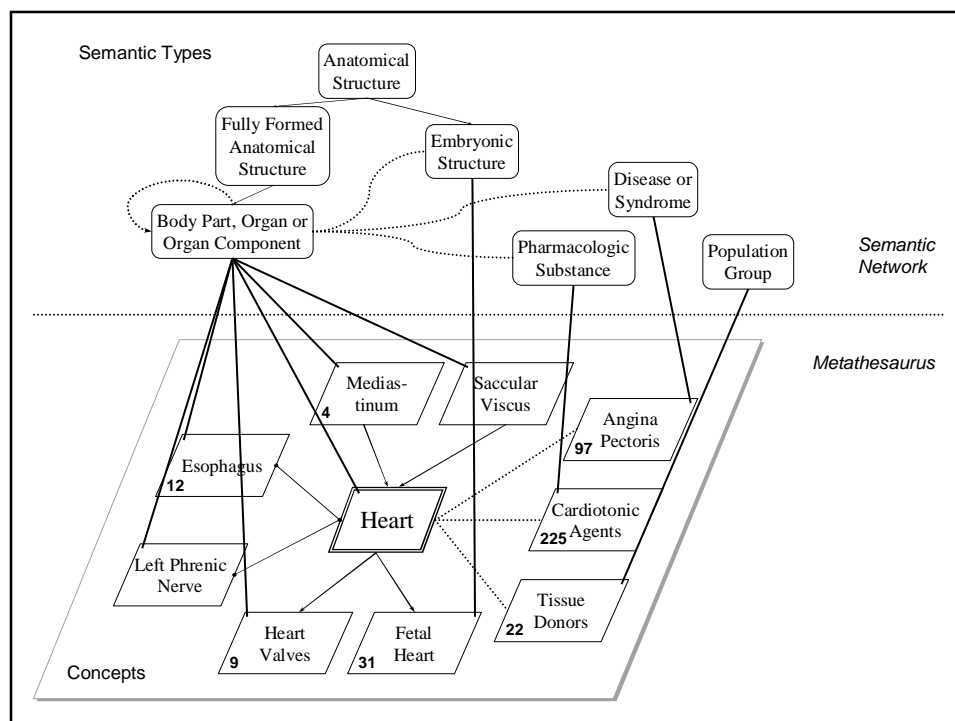
44

Symbolic relationships Attribute

- ◆ Hierarchical
 - isa (is-a-kind-of)
 - part-of
- ◆ Associative
 - location-of
 - caused-by
 - treats
 - ...
- ◆ Cross-references (mapping)



45



UMLS Semantic Network

Semantic Network

◆ Semantic types (135)

- tree structure
- 2 major hierarchies
 - Entity
 - Physical Object
 - Conceptual Entity
 - Event
 - Activity
 - Phenomenon or Process



Semantic Network

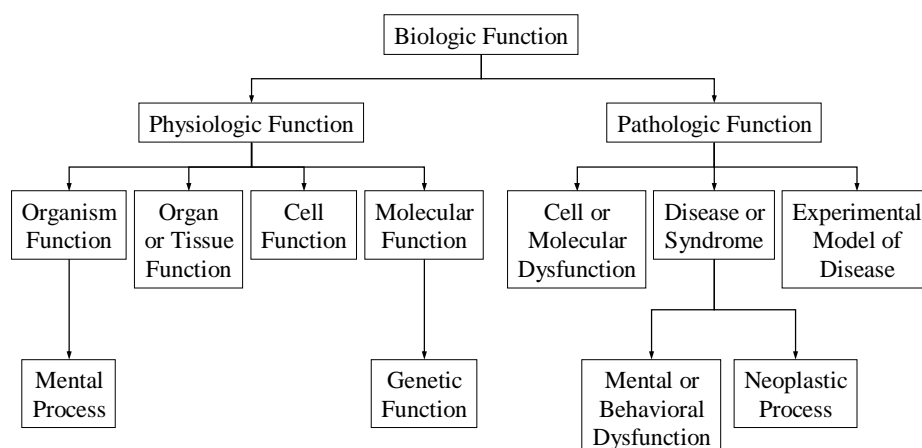
◆ Semantic network relationships (54)

- hierarchical (*isa* = is a kind of)
 - among types
 - Animal *isa* Organism
 - Enzyme *isa* Biologically Active Substance
 - among relations
 - treats *isa* affects
- non-hierarchical
 - Sign or Symptom *diagnoses* Pathologic Function
 - Pharmacologic Substance *treats* Pathologic Function



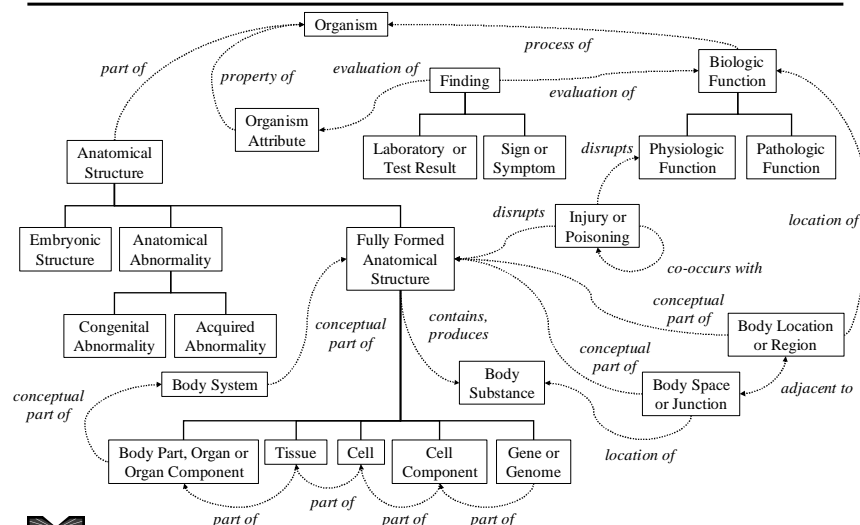
49

“Biologic Function” hierarchy (*isa*)



50

Associative (non-isa) relationships



51



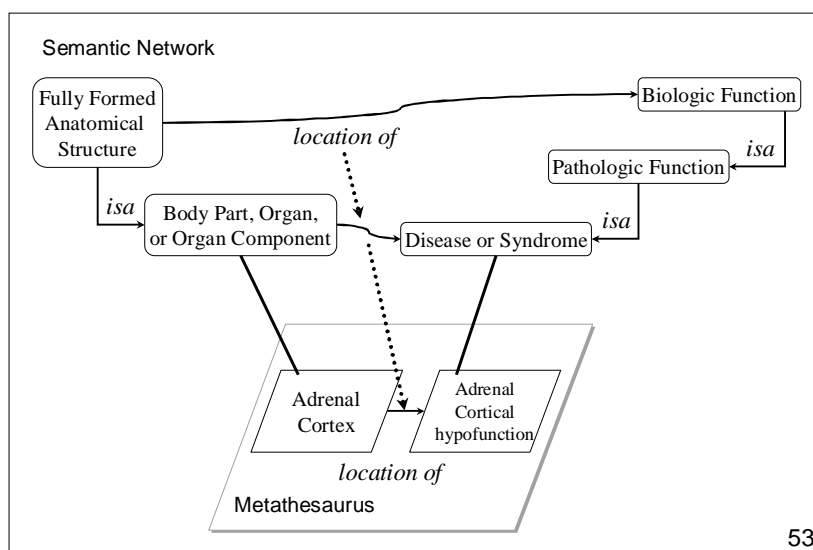
Why a semantic network?

- ◆ Semantic Types serve as high level categories assigned to Metathesaurus concepts, *independently of their position in a hierarchy*
- ◆ A relationship between 2 Semantic Types (ST) is a possible link between 2 concepts that have been assigned to those STs
 - The relationship may or may not hold at the concept level
 - Other relationships may apply at the concept level



52

Relationships can inherit semantics



SPECIALIST Lexicon and lexical tools

SPECIALIST Lexicon

◆ Content

- English lexicon
- Many words from the biomedical domain

◆ 200,000+ lexical items

◆ Word properties

- morphology
- orthography
- syntax

◆ Used by the lexical tools



55

Morphology

◆ Inflection

- | | |
|-------------|--|
| ● noun | nucleus, nuclei |
| ● verb | cauterize, cauterizes, cauterized, cauterizing |
| ● adjective | red, redder, reddest |

◆ Derivation

- | | | |
|-------------|--------|----------------------------|
| ● verb | ⇔ noun | cauterize -- cauterization |
| ● adjective | ⇔ noun | red -- redness |



56

Orthography

◆ Spelling variants

- oe/e oesophagus - esophagus
- ae/e anaemia - anemia
- ise/ize cauterise - cauterize
- genitive mark Addison's disease
Addison disease
Addisons disease



57

Syntax

◆ Complementation

- verbs
 - intransitive I'll treat.
 - transitive He treated the patient.
 - ditransitive He treated the patient with a drug.
- nouns
 - prepositional phrase
Valve of coronary sinus

◆ Position for adjectives



58

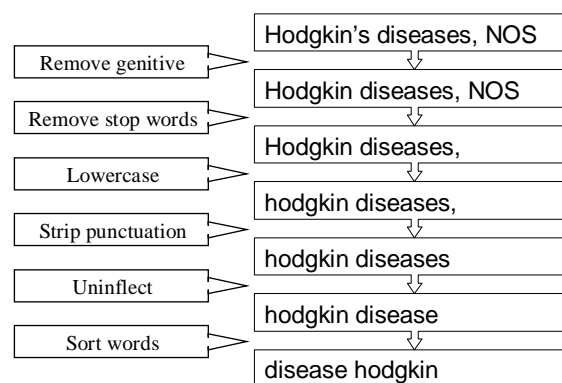
Lexical tools

- ◆ To manage lexical variation in biomedical terminologies
- ◆ Major tools
 - Normalization
 - Indexes
 - Lexical Variant Generation program (lvg)
- ◆ Based on the SPECIALIST Lexicon
- ◆ Used by noun phrase extractors, search engines



59

Normalization



60

Normalization: Example

Hodgkin Disease
HODGKINS DISEASE
Hodgkin's Disease
Disease, Hodgkin's
Hodgkin's, disease
HODGKIN'S DISEASE
Hodgkin's disease
Hodgkins Disease
Hodgkin's disease NOS
Hodgkin's disease, NOS
Disease, Hodgkins
Diseases, Hodgkins
Hodgkins Diseases
Hodgkins disease
hodgkin's disease
Disease, Hodgkin

normalize

disease hodgkin



61

Normalization Applications

- ◆ Model for lexical resemblance
- ◆ Help find lexical variants for a term
 - Terms that normalize the same usually share the same LUI
- ◆ Help find candidates to synonymy among terms
- ◆ Help map input terms to UMLS concepts



62

Indexes

- ◆ Word index
 - word to Metathesaurus strings
 - one word index per language
- ◆ Normalized word index
 - normalized word to Metathesaurus strings
 - English only
- ◆ Normalized string index
 - normalized term to Metathesaurus strings
 - English only



63

Lexical Variant Generation program

- ◆ Tool for specialists (linguists)
- ◆ Performs atomic lexical transformations
 - generating inflectional variants
 - lowercase
 - ...
- ◆ Performs sequences of atomic transformations
 - a specialized sequence of transformations provides the normalized form of a term (the *norm* program)



64

Part II

How to use the UMLS?

Outline

- ◆ Part II: *How to use the UMLS?*
 - Obtaining a license
 - Remote access
 - Knowledge Source Server (UMLSKS)
 - UMLSKS Application programming interface (API)
 - Local installation and customization (MetamorphoSys)



Part II

How to use the UMLS?

(1) Obtaining a license

First step License agreement

◆ Online Web-based license:

<http://www.nlm.nih.gov/research/umls/license.html>


- Read license Accept and continue
- Read appendix Accept
- Print a copy for your records Printer-friendly Version
- Complete the Web form Submit

- Verify:
 - receive e-mail from NLM; go to Web site within 72 hours and enter first and last name
- NLM official will countersign (turn-around time of a few days)
- Receive 2nd e-mail from NLM with new license number



68

<http://www.nlm.nih.gov/research/umls/license.html>


United States
National Library of Medicine
National Institutes of Health

Search NLM Web Site

[NLM Home](#) | [Contact NLM](#) | [Site Map](#) | [FAQs](#)

Unified Medical Language System
UMLS Home

[Home](#) > [Biomedical Research & Informatics](#) > [UMLS](#)
Printer-friendly Version

License Agreement for Use of the UMLS® Metathesaurus®

This Agreement is made by and between the National Library of Medicine, Department of Health and Human Services (hereinafter referred to as "NLM") and the LICENSEE.

WHEREAS, the NLM was established by statute in order to assist the advancement of medical and related sciences, and to aid the dissemination and exchange of scientific and other information important to the progress of medicine and to the public health, (section 465 of the Public Health Service Act, as amended (42 U.S.C. section 286) and to carry out this purpose has been authorized to develop the Unified Medical Language System® (UMLS) to facilitate the retrieval and integration of machine-readable biomedical information from disparate sources;

WHEREAS, the NLM's UMLS project has produced the UMLS Metathesaurus, a machine-readable vocabulary knowledge source, that is useful in a variety of settings;

WHEREAS, the LICENSEE is willing to use the UMLS Metathesaurus at its sole risk and at no expense to NLM, which will result in information useful to NLM, may provide immediate improvements in biomedical information transfer to segments of the biomedical community, and is consistent with NLM's statutory functions,

NOW THEREFORE, it is mutually agreed as follows:

1. The NLM hereby grants a nonexclusive, non-transferable right to LICENSEE to use the UMLS Metathesaurus and incorporate its content in any computer applications or systems designed to improve access to biomedical information of any type subject to the restrictions in

69

2. No charges, usage fees or royalties will be paid to NLM. **free from NLM**
3. LICENSEE is prohibited from distributing the UMLS Metathesaurus or subsets of it, including individual vocabulary sources within the Metathesaurus, except (a) as an integral part of computer applications developed by LICENSEE for a purpose other than redistribution of vocabulary sources contained in the UMLS Metathesaurus and (b) if permitted by paragraph 12 of this agreement.
4. LICENSEE agrees to inform NLM prior to distributing any application(s) in which it is using the UMLS Metathesaurus and is encouraged to inform NLM of any difficulties encountered in using the UMLS Metathesaurus, and changes or enhancements to the UMLS Metathesaurus that would make it more useful to LICENSEE and its user groups.
5. Within 30 days of the end of any calendar year in which LICENSEE makes use of the UMLS Metathesaurus, LICENSEE agrees to provide NLM with a brief report on the usefulness of the UMLS Metathesaurus in general and, if applicable, on the usefulness of CPT in the UMLS format in particular. LICENSEE is strongly encouraged to submit to NLM locally developed extensions to the UMLS Metathesaurus that are potentially useful to other UMLS users for consideration for potential inclusion in the UMLS Metathesaurus. **annual report**
6. NLM represents that the data provided under this Agreement were formatted with a reasonable standard of care, but makes no warranties express or implied, including no warranty of merchantability or fitness for particular purpose, regarding the accuracy or completeness of the data or that the machine-readable copy is error free. Therefore, LICENSEE agrees to hold NLM, the Government, and any organization contributing a vocabulary source to the UMLS Metathesaurus free from any liability resulting from errors in terminology or other data or on the machine-readable copy. NLM and such other organizations disclaim any liability for any consequences due to use, misuse, or interpretation of information contained or not contained in the UMLS Metathesaurus.
7. NLM represents that its ability to continue to include certain vocabulary sources within the UMLS Metathesaurus is dependent on continuing contractual relations or agreements with the copyright holders for these vocabulary sources. Therefore, LICENSEE agrees to hold NLM and the individual copyright holder free from any liability resulting from the removal of any vocabulary source from future editions of the UMLS Metathesaurus.
8. NLM reserves the right to change the type and format of its machine-readable data. NLM agrees to inform LICENSEE of any changes to the format of the UMLS Metathesaurus, EXCEPT the addition of entirely new data elements to the Metathesaurus, at least 90 days before the data are distributed.
9. The presence in the UMLS Metathesaurus of vocabulary or data produced by organizations other than NLM does not imply any endorsement of the UMLS Metathesaurus by these organizations.
10. LICENSEE shall acknowledge NLM as its source of the UMLS Metathesaurus, citing the year and version number, in a suitable and customary manner but may not in any way indicate or imply that NLM or any of the organizations whose vocabulary sources are included in the UMLS has endorsed LICENSEE or its products.

11. Some of the Material in the UMLS Metathesaurus is from copyrighted sources. If LICENSEE uses any material from copyrighted sources from the UMLS Metathesaurus:

- a) the LICENSEE is required to display in full, prior to providing user access to the Metathesaurus or any of the vocabulary sources within the UMLS, the following wording in order that its users be made aware of these copyright constraints:

"Some material in the UMLS Metathesaurus is from copyrighted sources of the respective copyright holders. Users of the UMLS Metathesaurus are solely responsible for compliance with any copyright, patent or trademark restrictions and are referred to the copyright, patent or trademark notices appearing in the original sources, all of which are hereby incorporated by reference.";

to display a list of all of the vocabularies contained within the UMLS Metathesaurus that are used in the LICENSEE's application; and to indicate for each vocabulary any appropriate copyright notice and whether the entire contents is present or only a portion of it.
- b) the LICENSEE is prohibited from altering UMLS and other vocabulary source content contained within the UMLS Metathesaurus, but may include content from other sources in applications that also contain content from the UMLS Metathesaurus. The LICENSEE may not imply in any way that data from other sources is part of the UMLS Metathesaurus or of any of its vocabulary sources.
- c) the LICENSEE is required to include in its applications identifiers from the UMLS Metathesaurus such that the original source vocabularies for any data obtained from the UMLS Metathesaurus can be determined by reference to a complete version of the UMLS Metathesaurus.

need to retain identifiers

12. For material in the UMLS Metathesaurus obtained from some sources additional restrictions on LICENSEE's use may apply. The categories of additional restrictions are described below. The list of UMLS Metathesaurus Vocabulary Sources, which is part of this Agreement and is updated when each version of the Metathesaurus is released, indicates the category of additional restrictions, if any, that apply to each vocabulary source.

additional licenses may be necessary

LICENSEE should contact the copyright holder directly to discuss uses of a source vocabulary beyond those allowed under this license agreement. If LICENSEE or LICENSEE's end user has a separate agreement with the copyright holder for use of a UMLS Metathesaurus source vocabulary, LICENSEE or LICENSEE's end user may use vocabulary source content obtained from the UMLS Metathesaurus in accordance with the terms of the separate agreement.

12. 1. Category 1:

LICENSEE is prohibited from translating the vocabulary source into another language or from producing other derivative works based on this single vocabulary source.

12. 2. Category 2:

12. 2. Category 2:

All category 1 restrictions AND

LICENSEE is prohibited from using the vocabulary source in operational applications that create records or information containing data from the vocabulary source. Use for data creation research or product development is allowed.

12. 3. Category 3:

LICENSEE's right to use material from the source vocabulary is restricted to internal use at the LICENSEE's site(s) for research, product development, and statistical analysis only. Internal use includes use by employees, faculty, and students of a single institution at multiple sites. Notwithstanding the foregoing, use by students is limited to doing research under the direct supervision of faculty. Internal research, product development, and statistical analysis use expressly excludes: use of material from these copyrighted sources in routine patient data creation; incorporation of material from these copyrighted sources in any publicly accessible computer-based information system or public electronic bulletin board including the Internet; publishing or translating or creating derivative works from material from these copyrighted sources; selling, leasing, licensing, or otherwise making available material from these copyrighted works to any unauthorized party; and copying for any purpose except for back up or archival purposes.

LICENSEE may be required to display special copyright, patent and/or trademark notices before displaying content from the vocabulary source. Applicable notices are included in the list of UMLS Metathesaurus Vocabulary sources, that is part of this Agreement.

12. 4. Category 4: **new SNOMED category**

12.4.1. LICENSEE is prohibited from translating the vocabulary source into another language or from altering the vocabulary source content.

12.4.2. LICENSEE's right to use the vocabulary source is restricted to use in the U.S. by LICENSEE's employees, contractors, faculty, students, clients, patients, or constituents within electronic systems or devices built, purchased, licensed, or used by LICENSEE for U.S. governmental purposes or for any health care, public health, research, educational, or statistical use in the U.S. Use by students is limited to research or educational activities under the direct supervision of faculty.

12.4.3. LICENSEE has the right to distribute the vocabulary source in the U.S., but only in combination with other UMLS Metathesaurus content. Further, LICENSEE's right to distribute is restricted to:

- a. Electronic distribution to LICENSEE's direct U.S. affiliates, or to other U.S. entities that have signed the UMLS license, in order to facilitate use of the vocabulary for health care, public health, research, educational or statistical purposes in the U.S.

U.S. only.

- i. LICENSEE must take reasonable precautions to prevent distribution of the vocabulary source to non-US entities.
- ii. LICENSEE must include in its annual report a list of all U.S. affiliates or other U.S. entities to whom it has distributed content from the vocabulary source.

- b. Distribution of encoded patient level data sets or knowledge encoded in the vocabulary source by LICENSEE to any U.S. entity for use in the U.S. only.
- c. Inclusion of encoded records or content from the vocabulary source in: (1) free publicly accessible retrieval systems or (2) fee-based retrieval systems that are accessible within the U.S. only, provided that these systems do not permit users to copy or extract any significant portion of the vocabulary source.

12.4.4. DEFINITIONS

- a. U.S. is defined as all U.S. states, territories, and the District of Columbia; any U.S. government facility or office, whether permanent or temporary, wherever located; and access to a system in any of these locations by U.S. government employees, designated representatives or contractors, wherever located, for U.S. government purposes.
- b. U.S. entity is defined as (i) for government entities, an agency or department of the U.S. Government, (ii) for corporations, as a corporation incorporated and operating in the U.S.; and (iii) for other entities as an entity organized under the laws of the U.S.

13. LICENSEE shall take reasonable steps to ensure that anyone who has authorized access to data or vocabulary sources from the UMLS Metathesaurus under this Agreement complies with its provisions.
14. LICENSEE and/or its end users shall be solely responsible for compliance with any copyright or other restrictions on vocabulary sources in the UMLS Metathesaurus; NLM assumes no responsibility or liability associated with the LICENSEE's (or any of the LICENSEE's users) use and/or reproduction of copyrighted material, patent or trademark violations. Anyone contemplating reproduction of all or any portion of the UMLS Metathesaurus or any of its vocabulary sources should consult legal counsel.

The holder of a copyright in any vocabulary source shall be a third party beneficiary to this agreement and shall have a right to enforce the agreement against any LICENSEE that violates any provision pertaining to that copyright holder.

15. This Agreement shall be effective until terminated by one of the parties upon 30 days written notice to the other party. LICENSEE's failure to abide by the terms of the Agreement shall be grounds for its termination. Neither the Government, its employees, or any

- b. U.S. entity is defined as (i) for government entities, an agency or department of the U.S. Government, (ii) for corporations, as a corporation incorporated and operating in the U.S.; and (iii) for other entities as an entity organized under the laws of the U.S.

13. LICENSEE shall take reasonable steps to ensure that anyone who has authorized access to data or vocabulary sources from the UMLS Metathesaurus under this Agreement complies with its provisions.
14. LICENSEE and/or its end users shall be solely responsible for compliance with any copyright or other restrictions on vocabulary sources in the UMLS Metathesaurus; NLM assumes no responsibility or liability associated with the LICENSEE's (or any of the LICENSEE's users) use and/or reproduction of copyrighted material, patent or trademark violations. Anyone contemplating reproduction of all or any portion of the UMLS Metathesaurus or any of its vocabulary sources should consult legal counsel.

The holder of a copyright in any vocabulary source shall be a third party beneficiary to this agreement and shall have a right to enforce the agreement against any LICENSEE that violates any provision pertaining to that copyright holder.


15. This Agreement shall be effective until terminated by one of the parties upon 30 days written notice to the other party. LICENSEE's failure to abide by the terms of the Agreement shall be grounds for its termination. Neither the Government, its employees, or any vocabulary sources contained in the UMLS Metathesaurus shall be liable or responsible to LICENSEE in any manner whatsoever for damages of any nature whatsoever arising from the termination of this Agreement.
16. In the event that any provision of this Agreement is determined to violate any law or is unenforceable, the remainder of the Agreement shall remain in full force and effect.

Accept & continue

Last updated: 26 March 2004
First published: 01 January 1997
Permanence level: Permanence Not Guaranteed
[Previous version](#)

[Copyright, Privacy, Accessibility](#)
 U.S. National Library of Medicine, 8600 Rockville Pike, Bethesda, MD 20894
 National Institutes of Health, Health & Human Services

[Home](#) > [Biomedical Research & Informatics](#) > [UMLS](#) > [License Agreement](#)

 [Printer-friendly Version](#)

APPENDIX A.1

Appendix to the License Agreement for Use of the UMLS® Metathesaurus

UMLS METATHESAURUS® SOURCE VOCABULARIES -- 2004AB Edition

Sources are listed in order according to the abbreviations used in the UMLS Metathesaurus files. If additional restrictions and notices apply, the category of restrictions and the special notices appear under the name of the source. See the license agreement for an explanation of the categories of restrictions. Many sources publish printed editions and/or other explanatory information that may be essential to understanding the purpose and application of particular sources in data creation and retrieval. Contact information is provided for each source. Please address questions about permissions or license agreements for additional uses not covered by this Agreement, or other inquiries about individual sources, to the appropriate contacts.

NLM is working toward inclusion in the UMLS Metathesaurus of the complete, current edition of most of these vocabulary sources.

AIR93 AI/RHEUM. Bethesda, (MD): National Library of Medicine, Lister Hill Center, 1993.

Contact: May Cheh, Lister Hill Center, National Library of Medicine, Bethesda MD; e-mail: cheh@nlm.nih.gov

ALT2003 Alternative Billing Concepts (AltLink). Albuquerque (NM): Alternative Link LLC, 2003.

[CATEGORY 3 RESTRICTIONS APPLY](#)

Contact: Alternative Link LLC; 6121 Indian School Road NE, Suite 131; Albuquerque, NM 87110; phone: 877-621-5465; <http://www.alternativelink.com>; e-mail: mail@alternativelink.com

[Home](#) > [Biomedical Research & Informatics](#) > [UMLS](#) > [License Agreement](#)

VANDF03 U.S. Department of Veterans Affairs, Veterans Health Administration National Drug File. Department of Veterans Affairs, Washington, DC. Release Date: March 13, 2003.

*NOTE: Now a CATEGORY 0

Contact: Steven Brown; CPEP Office; 1310 24th Avenue S; Nashville, TN 37215; e-mail: Steven.Brown@msd.va.gov

WHO97 WHO Adverse Drug Reaction Terminology (WHOART). Uppsala (Sweden): WHO Collaborating Centre for International Drug Monitoring, 1997.

[CATEGORY 2 RESTRICTIONS APPLY](#)

The Metathesaurus includes translations of WHO97 in French (WHOFRE_1997), German (WHOGER_1997), Portuguese (WHOPOR_1997), and Spanish (WHOSPA_1997).

Contact: WHO Collaborating Centre for International Drug Monitoring, Stora Target 3, S-753 20 Uppsala, Sweden; fax: 18-656080

Last updated: 20 July 2004
First published: 26 March 2004
Permanence level: Permanence Not Guaranteed

[Copyright, Privacy, Accessibility](#)
U.S. National Library of Medicine, 8600 Rockville Pike, Bethesda, MD 20894
[National Institutes of Health, Health & Human Services](#)

License Restriction Levels 0-4

- ◆ Level 0 (28.2%)
 - *unrestricted*
- ◆ Level 1 (1.6%)
 - *negotiate to translate*
- 67% ◆ Level 2 (0.4%)
 - *negotiate to use in health data creation*
- ◆ Level 3 (30.6%)
 - *negotiate to use in production*
 - *Explicitly prohibited to provide Internet access*
- ◆ Level 4 (39.2%)
 - *unrestricted for U.S. use and distribution*

There may be additional restrictions, or separate license fees, associated with usage of specific vocabularies. Read the UMLS License, including the Appendix!



77

Part II

How to use the UMLS?

(2) Remote access

Remote Access

- ◆ UMLS Knowledge Source Server:
<http://umlsks.nlm.nih.gov>
- ◆ Web search interface
- ◆ Application Programming Interface (API)



79

Knowledge Source Server
Web search interface

UMLSKS Web search interface

- ◆ Logging in
- ◆ Basic searching
- ◆ Advanced searching



81

UMLSKS Web search interface log in

UMLS Knowledge Source Server (UMLSKS)

UMLSKS Registered Users

Log ID:

Password:

Login

[Forgot your password?](#)

[Request Account](#)

New UMLSKS Users

The UMLSKS is restricted to registered users. If you are a registered user and would like to log in, please enter your UMLSKS user account information below.

Log ID:

Password:

Confirm Password:

First Name:

Last Name:

Request Account

What's New

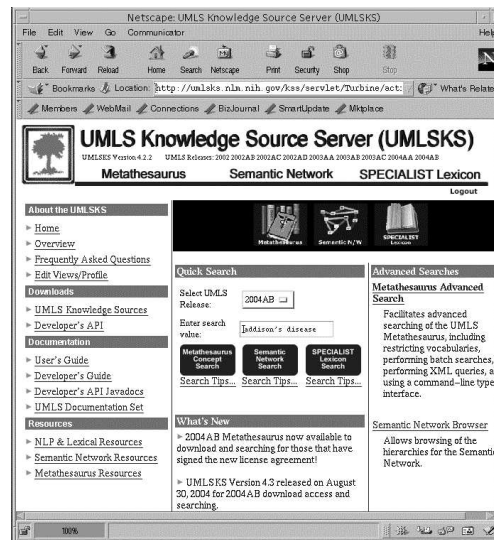
- UMLSKS Version 4.2 released on 07/22/04. Look [here](#) for a list of new features and bug fixes.
- 2004AA Metathesaurus - including SNOMED CT® - now available to download for those that have signed the new license agreement!
- Existing users may click on the [Forgot your password link](#) (above) and enter the new browser.



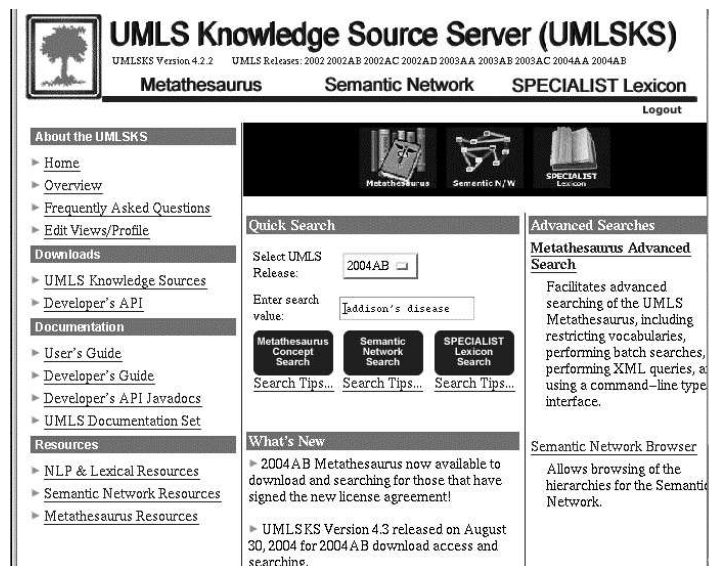
82

UMLS Knowledge Source Server Home Page

- ◆ Tabs across top access basic searching of 3 Knowledge Sources
- ◆ Advanced searching options on right-hand side



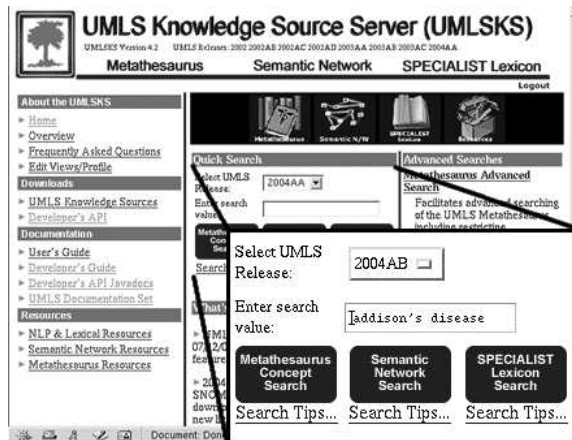
UMLS Knowledge Source Server Home Page



84

Metathesaurus Basic Search

Addison's disease



◆ UMLS Release

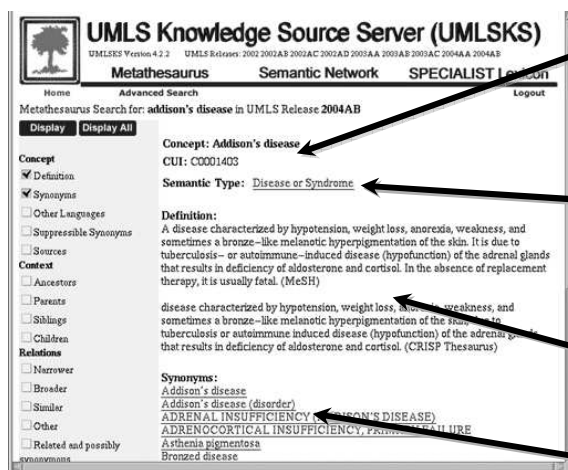
◆ Search Term

◆ UMLS Knowledge Source



85

Concept Report *Addison's disease*



◆ Concept Name /CUI

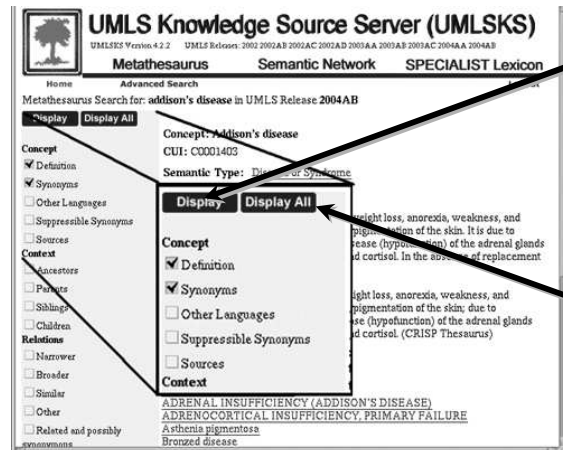
◆ Semantic Type(s)

◆ Definition(s)

◆ Synonyms

86

Display All



“Display”
shows results
for selected
options

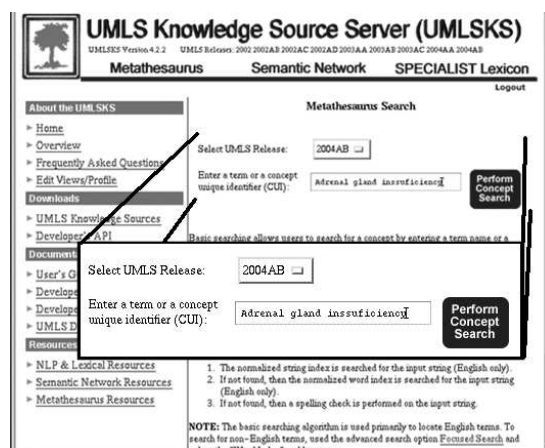
“Display All”
shows results
for all available
options



87

Metathesaurus Basic Search

Adrenal gland insufficiency



- ◆ Specify:
 - UMLS Release
 - Search term

- ◆ Algorithm:
 - Search Normalized String
 - Search Normalized Word
 - Suggest Spelling



88

Basic Concept Report

Adrenal gland insufficiency

UMLS Knowledge Source Server (UMLSKS)
UMLSKS Version 4.2.2 UMLS Releases: 2002 2002AB 2002AC 2002AD 2003AA 2003AB 2003AC 2004AA 2004AB

Home Advanced Search Metathesaurus Semantic Network SPECIALIST Lexicon Logout

Metathesaurus Search for: **Adrenal Gland Insufficiency** in UMLS Release 2004AB

Display **Display All**

Concept: Adrenal gland hypofunction
CUI: C0001623

Semantic Type: Disease or Syndrome

Definition:
Adrenocortical hypofunction includes all conditions in which adrenal steroid hormone secretion falls below the requirements of the body. Adrenal insufficiency may be divided into two general categories: (1) those associated with primary failure of the adrenal to elaborate sufficient quantities of hormone and (2) those associated with a secondary failure due to a primary failure in the elaboration of adrenocorticotropin. (Harrison's Principles of Internal Medicine, 13th ed, p1970) (MeSH)

Synonyms:
Adrenal gland hypofunction
Adrenal failure
Adrenal Gland Insufficiency
Adrenal hypofunction
Adrenal insufficiency
Hypofunction, Adrenal Gland

Other languages:
Czech: NADLEDVINY - HYPOFUNKCE
Dutch: bijnierhypofunctie
Bijnerhypofunctie
Bijnierinsufficiëntie

Concept: Adrenal gland hypofunction
CUI: C0001623

Semantic Type: Disease or Syndrome

Definition:
Adrenocortical hypofunction includes all conditions in which adrenal steroid hormone secretion falls below the requirements of the body. Adrenal insufficiency may be divided into two general categories: (1) those associated with primary failure of the adrenal to elaborate sufficient quantities of hormone and (2) those associated with a secondary failure due to a primary failure in the elaboration of adrenocorticotropin. (Harrison's Principles of Internal Medicine, 13th ed, p1970) (MeSH)

Synonyms:
Adrenal gland hypofunction



89

Concept Report Display All

Adrenal Gland Insufficiency

UMLS Knowledge Source Server (UMLSKS)
UMLSKS Version 4.2.2 UMLS Releases: 2002 2002AB 2002AC 2002AD 2003AA 2003AB 2003AC 2004AA 2004AB

Home Advanced Search Metathesaurus Semantic Network SPECIALIST Lexicon Logout

Metathesaurus Search for: **adrenal gland insufficiency** in UMLS Release 2004AB

Display **Display All**

Concept: Adrenal gland hypofunction
CUI: C0001623

Semantic Type: Disease or Syndrome

Definition:
Adrenocortical hypofunction includes all conditions in which adrenal steroid hormone secretion falls below the requirements of the body. Adrenal insufficiency may be divided into two general categories: (1) those associated with primary failure of the adrenal to elaborate sufficient quantities of hormone and (2) those associated with a secondary failure due to a primary failure in the elaboration of adrenocorticotropin. (Harrison's Principles of Internal Medicine, 13th ed, p1970) (MeSH)

Synonyms:
Adrenal gland hypofunction
Adrenal failure
Adrenal Gland Insufficiency
Adrenal hypofunction
Adrenal insufficiency
Hypofunction, Adrenal Gland

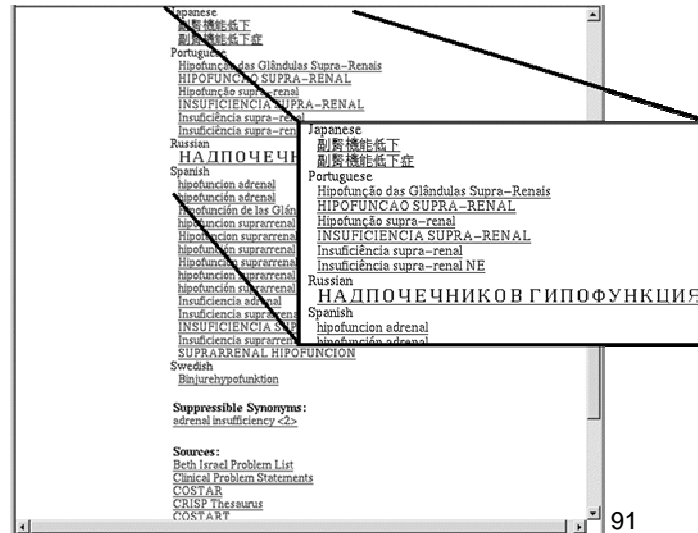
Other languages:
Czech: NADLEDVINY - HYPOFUNKCE
Dutch: bijnierhypofunctie
Bijnierhypofunctie
Bijnierinsufficiëntie



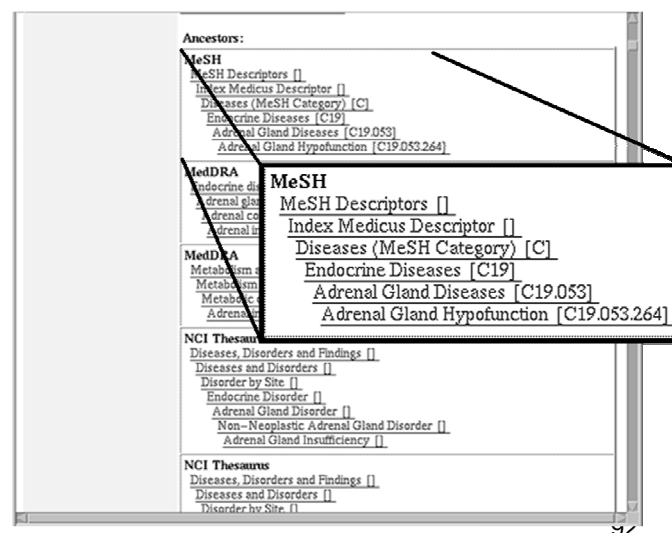
- ◆ Concept Name/CUI
- ◆ Semantic Type(s)
- ◆ Definition(s)
- ◆ Synonyms, including foreign languages
- ◆ Relations (broader, narrower, etc.)
- ◆ Co-occurrence data

90

Synonyms



Hierarchies



Concept Report Display All (continued)

Relations



THYROIDITIS [0420]
 THYROXINE DECREASED [1349]
 TSH DECREASED [1690]
 TSH INCREASED [1831]
 VIRILISM [0421]

Narrower Concepts:

Addison's disease (National Drug File - Reference Terminology) [Relation: isa]
 Addison's disease (Metathesaurus Names) [Relation:]
 Hypoadosteronism (National Drug File - Reference Terminology) [Relation: isa]
 Other adrenal hypofunction NOS (Metathesaurus Names) [Relation:]
 Adrenoleukodystrophy (National Drug File - Reference Terminology) [Relation: isa]

Narrower Concepts:

Addison's disease (National Drug File - Reference Terminology) [Relation: isa]
 Addison's disease (Metathesaurus Names) [Relation:]
 Hypoadosteronism (National Drug File - Reference Terminology) [Relation: isa]
 Adrenal Gland Diseases (National Drug File - Reference Terminology) [Relation: inverse isa]
 Adrenal Gland Diseases (Metathesaurus Names) [Relation:]
 Endocrine Diseases (Metathesaurus Names) [Relation:]
 Endocrine Diseases (WHO Adverse Reaction Terms) [Relation:]
 Adrenal cortical hypofunction (SNOMED Clinical Terms)

Concept Report Display All (continued)

Co-occurrence
data



psychology
 radiography
 radionuclide imaging
 radiotherapy
 rehabilitation
 surgery
 therapy
 urine
 veterinary
 ultrasonography
 virology

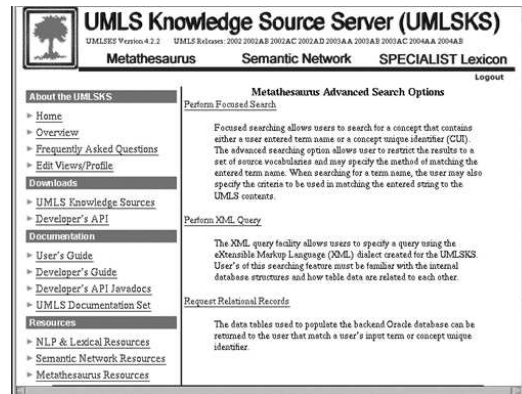
Associated Expressions: None found.

Co-occurring MeSH Terms:

[64] Corticotropin
 [57] Hydrocortisone
 [38] Glucocorticoids
 [31] Esophageal achalasia
 [30] Dog Diseases
 [28] Adrenal Glands
 [64] Corticotropin
 [57] Hydrocortisone
 [38] Glucocorticoids
 [31] Esophageal achalasia
 [30] Dog Diseases
 [28] Adrenal Glands

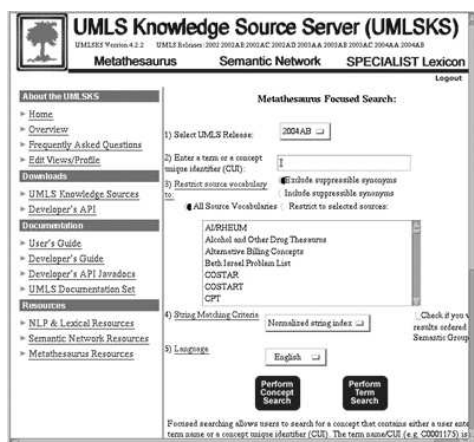
Metathesaurus Advanced Search Options

- ◆ Focused Search
- ◆ Raw Relational Records



95

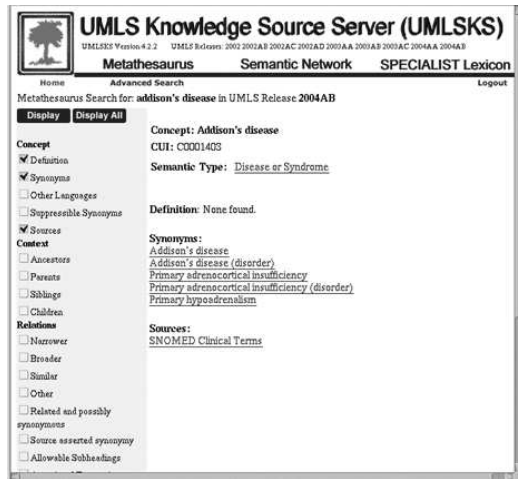
Metathesaurus Advanced Search Feature Focused Search



- ◆ UMLS Release
- ◆ Search Term
- ◆ Source Vocabularies
- ◆ String Criteria
 - Exact Match
 - Normalized string & word
 - Word
 - Truncation (left/right)
 - Approximate Match
- ◆ Language

96

Restricted Source Concept Report *Addison's Disease*



UMLS Knowledge Source Server (UMLS)
UMLS Version 4.2.2 UMLS Releases: 2002 2002AB 2002AC 2002AD 2003AA 2003AB 2003AC 2004AA 2004AB

Metathesaurus Semantic Network SPECIALIST Lexicon

Home Advanced Search Logout

Metathesaurus Search for: **addison's disease** in UMLS Release **2004AB**

Display **Display All**

Concept
☒ Definition
☒ Synonyms
☐ Other Languages
☐ Suppressible Synonyms

Context
☐ Ancestors
☐ Parents
☐ Siblings
☐ Children

Relations
☐ Narrower
☐ Broader
☐ Similar
☐ Other
☐ Related and possibly synonymous
☐ Source asserted synonymy
☐ Allowable Subheadings

Concept: Addison's disease
CUI: C0001403
Semantic Type: [Disease or Syndrome](#)
Definition: None found.

Synonyms:
[Addison's disease](#)
[Addison's disease \(disorder\)](#)
[Primary adrenocortical insufficiency](#)
[Primary adrenocortical insufficiency \(disorder\)](#)
[Primary hypoadrenalism](#)

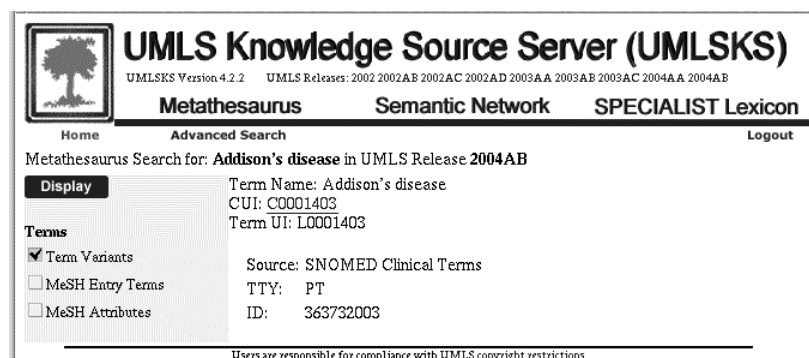
Sources:
[SNOMED Clinical Terms](#)

- ◆ UMLS Release:
2004AB
- ◆ Search Term:
addison's disease
- ◆ Source Vocabulary:
SNOMED CT
- ◆ String Criteria:
Normalized string
- ◆ Language:
English



97

Addison's disease in SNOMED CT Preferred Term and Code



UMLS Knowledge Source Server (UMLS)
UMLS Version 4.2.2 UMLS Releases: 2002 2002AB 2002AC 2002AD 2003AA 2003AB 2003AC 2004AA 2004AB

Metathesaurus Semantic Network SPECIALIST Lexicon

Home Advanced Search Logout

Metathesaurus Search for: **Addison's disease** in UMLS Release **2004AB**

Display

Terms
☒ Term Variants
☐ MeSH Entry Terms
☐ MeSH Attributes

Term Name: Addison's disease
CUI: C0001403
Term UI: L0001403

Source: SNOMED Clinical Terms
TTY: PT
ID: 363732003

Users are responsible for compliance with [UMLS copyright restrictions](#)

- ◆ TTY: Term Type
- ◆ ID: Source Code Descriptor



98

Metathesaurus Advanced Search Feature Relational Record Request

◆ UMLS Release

◆ Search Term

◆ UMLS Relational Table

UMLS Knowledge Source Server (UMLSKS)
UMLSKS Version 4.2.2 UMLS Releases: 2002 2002AB 2002AC 2002AD 2003AA 2003AB 2003AC 2004AA 2004AB

Metathesaurus Semantic Network SPECIALIST Lexicon

[Logout](#)

About the UMLSKS

- Home
- Overview
- Frequently Asked Questions
- Edit Views/Profile
- Downloads
- UMLS Knowledge Sources
- Developer's API

Documentation

- User's Guide
- Developer's Guide
- Developer's API Javadocs
- UMLS Documentation Set

Resources

- NLP & Lexical Resources
- Semantic Network Resources
- Metathesaurus Resources

Metathesaurus Relational Records Request:

Select UMLS Release:

1) Enter a term or concept unique identifier (CUI):

2) Select the UMLS table whose raw records are to be returned:

Raw record return allows users to search for a concept using either a user entered concept unique identifier (CUI) or a term name which is entered into the text entry box below. Any of the UMLS tables listed in the drop down menu may be selected for return.

Pressing the Perform Concept Search button will update the display to show the raw records from the selected table based on the concept information found.



99

Relational Records MRCONSO.RRF

```

CUI|LAT|TS|LUI|STT|SUI|ISPREF|AUI|SAUI|SCUI|SDUI|SAB|TTY|CODE|STR|SUPPRESS|CUI|
C0001403|CZE|P|L3180742|PF|S3708232|Y|A3910108|||D000224|MSHCZE|MH|D000224|ADDISONOVA NEMOC|
C0001403|DUT|P|L2048638|PF|S2386860|N|A6566810|||10001130|MRDUT|LT|10001130|Addison, ziekte v|
C0001403|DUT|P|L2048638|PF|S2386860|Y|A3931189|||D000224|MSHDUT|MH|D000224|Addison, ziekte v|
C0001403|DUT|S|L2048637|PF|S2386859|Y|A3931188|||D000224|MSHDUT|SY|D000224|Addison, syndroom|
C0001403|DUT|S|L2528364|PF|S2985131|Y|A3966882|||D000224|MSHDUT|SY|D000224|Ziekte van Addison|
C0001403|DUT|S|L3205108|PF|S3732602|N|A5146733|E27.1|||CD10DUT|PT|E27.1|Primaire bijniersch|
C0001403|DUT|S|L3205108|PF|S3732602|Y|A3970882|||D000224|MSHDUT|SY|D000224|Primaire bijniersch|
C0001403|DUT|S|L4999233|PF|S5686738|Y|A6627443|||10036696|MRDUT|LT|10036696|primair hypoadr|
C0001403|DUT|S|L4999270|PF|S5686775|N|A6627493|||10052381|MRDUT|LT|10052381|primaire bijnie|
C0001403|DUT|S|L4999270|PF|S5686775|Y|A6627494|||10052381|MRDUT|PT|10052381|primaire bijnie|
C0001403|DUT|S|L5012413|PF|S5699917|Y|A6645695|||10013096|MRDUT|LT|10013096|ziekte van Addi|
C0001403|ENG|P|L0001403|PF|S0354372|N|A0388276|||A0D|DE|0000006012|Addison's disease|0||
C0001403|ENG|P|L0001403|PF|S0354372|N|A0388277|||0060-3321|CSP|PT|0060-3321|Addison's diseas|
C0001403|ENG|P|L0001403|PF|S0354372|N|A0388279|||LCH|PT|U000061|Addison's disease|0||
C0001403|ENG|P|L0001403|PF|S0354372|N|A0388280|||10001390|MDR|LT|10001390|Addison's diseasel|
C0001403|ENG|P|L0001403|PF|S0354372|N|A0388281|||RCD|PT|C1541|Addison's disease|3||

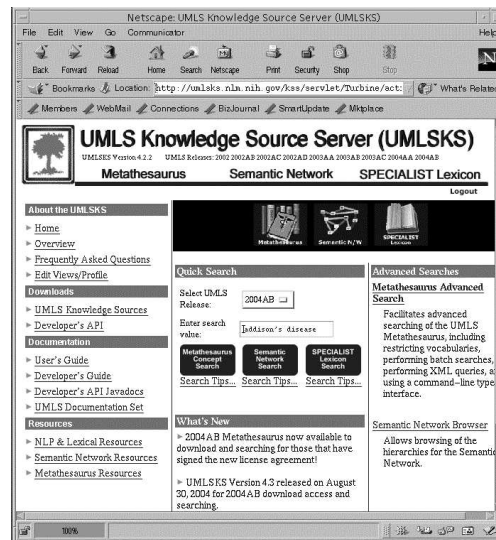
```



100

Semantic Network Searching

- ◆ Select Tab along top
- ◆ Quick search
- ◆ Advanced Search on right-hand side



Semantic Network Search

- ◆ Enter search string
- or-
- ◆ Select semantic type
- or-
- ◆ Select semantic relation



102

Semantic Type Clinical Drug

Metathesaurus Semantic Network SPECIALIST Lexicon

Click here to view the latest 2003-based version of the Semantic Network browser. This is best viewed with Netscape 6.x and above or IE 5.5 and above.

Semantic Types: [Enter](#) [Browse](#)

Please Enter a Semantic Type or Relation in the

Semantic Types: ☐ Acquired Abnormality ☐ Relation(s): ☐ adjacent_to ☐ affects ☐ analyzes ☐ assesses_effect_of ☐ associated_with

Semantic Type: Clinical Drug
TUI: T200
Definition: A pharmaceutical preparation as produced by the manufacturer. The name usually includes the substance, its strength, and the form, but may include the substance and only one of the other two items.

☐ Meta Concepts ☐ Relations ☐ Raw Records

Semantic Type: Clinical Drug
TUI: T200
Definition: A pharmaceutical preparation as produced by the manufacturer. The name usually includes the substance, its strength, and the form, but may include the substance and only one of the other two items.

☐ Meta Concepts ☐ Relations ☐ Raw Records

Enter
Physical Object
Organism
Plant
Alga
Fungus
Virus
Bacterium or Chlamydia
Bacterium
Animal
Invertebrate
Vertebrate
Amphibian
Rept
Fish
Bird
Mammal
& Mammal

- ◆ Browse ST hierarchy
- ◆ View Concepts with ST
- ◆ View Relations valid for the ST
- ◆ View Raw Relational Records



103

Show Relations Between Types

UMLS Knowledge Source Server (UMLSKS)

UMLSKS Version 4.2.2 UMLS Releases: 2002 2002AB 2002AC 2002AD 2003AA 2003AB 2003AC 2004AA 2004AB

Metathesaurus Semantic Network SPECIALIST Lexicon

Home Logout

Select an element from each list below and click the **Submit Query** button.

Type 1:
Acquired Abnormality
Activity
Age Group
Alga
Amino Acid Sequence

Relation(s):
adjacent_to
affects
analyzes
assesses_effect_of
associated_with

Type 2:
Acquired Abnormality
Activity
Age Group
Alga
Amino Acid Sequence

Submit Query **Reset**

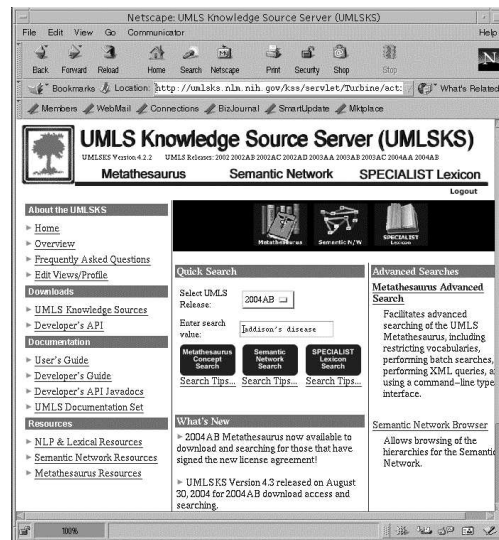
- ◆ Validates whether a selected Semantic Relationship (SR) holds between two selected Semantic Types (ST)



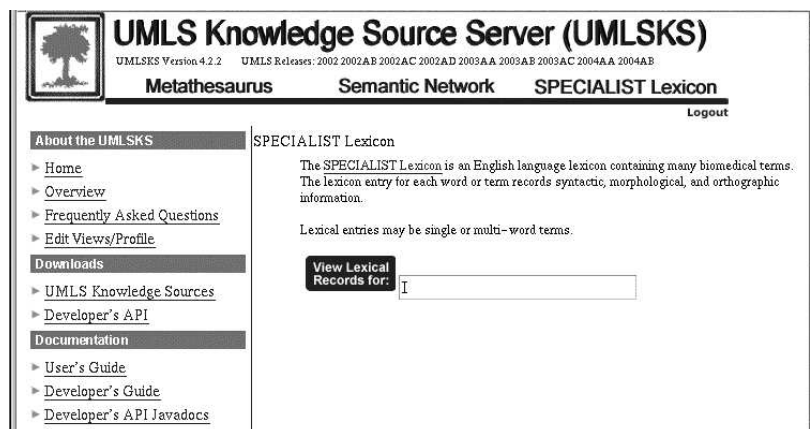
104

SPECIALIST Lexicon Searching

- ◆ Select Tab along top
- ◆ Quick search

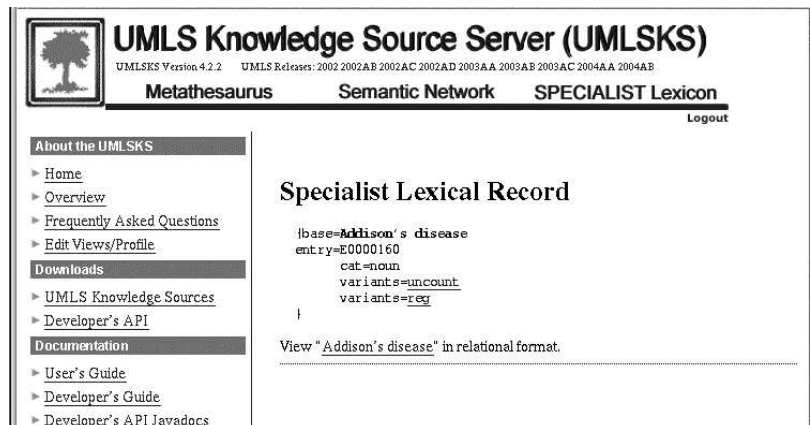


SPECIALIST Lexicon Search



106

SPECIALIST Lexical Record



UMLS Knowledge Source Server (UMLSKS)
 UMLSKS Version 4.2.2 UMLS Releases: 2002 2002AB 2002AC 2002AD 2003AA 2003AB 2003AC 2004AA 2004AB

Metathesaurus Semantic Network SPECIALIST Lexicon

Logout

About the UMLSKS

- Home
- Overview
- Frequently Asked Questions
- Edit Views/Profile
- Downloads
- UMLS Knowledge Sources
- Developer's API
- Documentation
- User's Guide
- Developer's Guide
- Developer's API Javadocs

Specialist Lexical Record

base=Addison's disease
 entry=E0000160
 cat=noun
 variants=uncount
 variants=reg

View "Addison's disease" in relational format.



107

UMLS Resources

◆ NLP & Lexical Resources

- MetaMap Transfer (MMTx)
- Word Sense Disambiguation (WSD) Test Collection

◆ Semantic Network

- Semantic Navigator
- Semantic Groups

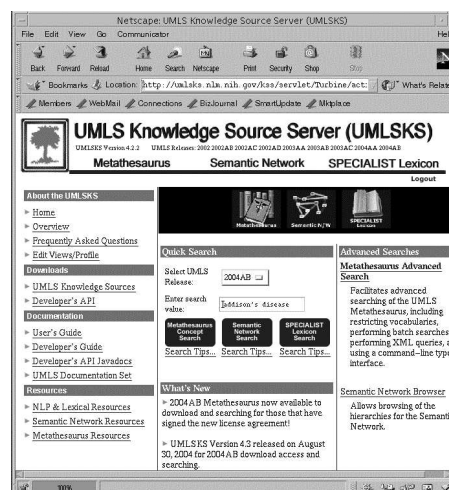
◆ Metathesaurus

- String Properties



Resources

- NLP & Lexical Resources
- Semantic Network Resources
- Metathesaurus Resources



UMLS Knowledge Source Server (UMLSKS)
 UMLSKS Version 4.2.2 UMLS Releases: 2002 2002AB 2002AC 2002AD 2003AA 2003AB 2003AC 2004AA 2004AB

Metathesaurus Semantic Network SPECIALIST Lexicon

Logout

About the UMLSKS

- Home
- Overview
- Frequently Asked Questions
- Edit Views/Profile
- Downloads
- UMLS Knowledge Sources
- Developer's API
- Documentation
- User's Guide
- Developer's Guide
- Developer's API Javadocs
- UMLS Documentation Set

What's New

- 2004AB Metathesaurus now available to download and searching for those that have signed the new license agreement!
- UMLSKS Version 4.3 released on August 30, 2004 for 2004AB download access and searching.

Quick Search

Select UMLS Release: 2004AB

Enter search value: Addison's disease

Metathesaurus Concept Search **Semantic Network Search** **SPECIALIST Lexicon Search**

Advanced Searches

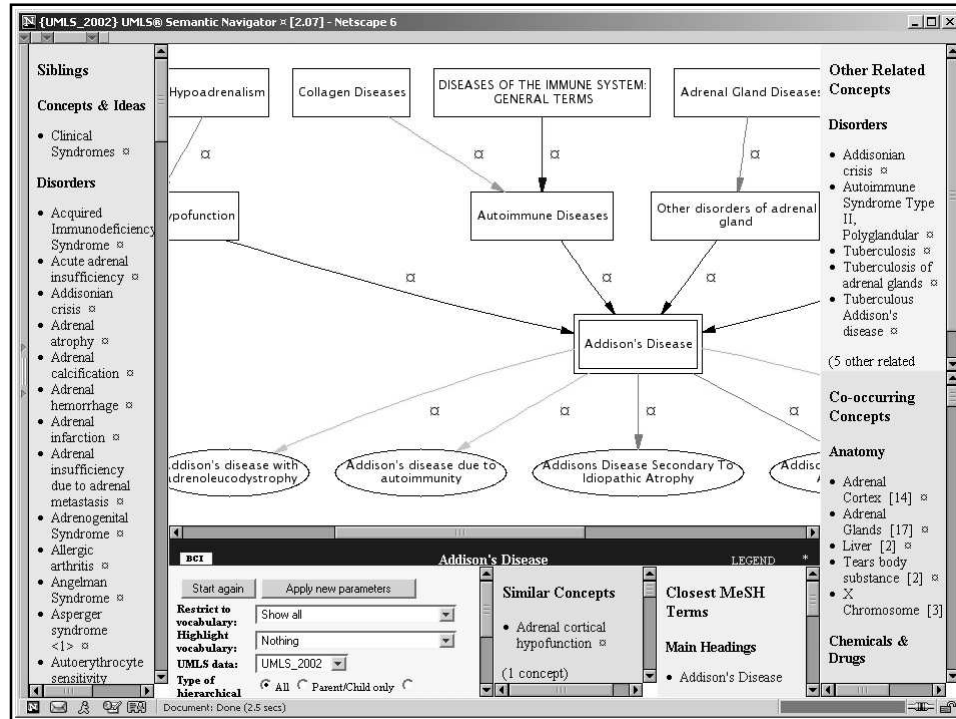
Metathesaurus Advanced Search

Facilitates advanced searching of the UMLS Metathesaurus including restricting vocabularies, performing batch searches, using a command-line type interface.

Semantic Network Browser

Allows browsing of the hierarchies for the Semantic Network.

108



Knowledge Source Server *Application Programming Interface*

UMLSKS API basics

- ◆ Remote server at NLM
- ◆ Local application connected through

Java RMI

- ◆ Java-based applications
- ◆ Developer's Guide:
Chapter 3
- ◆ Set of Java classes
(part of the UMLSKS API
download)
- ◆ Detailed *Javadoc*
documentation online and with
API download




111

TCP/IP socket

- ◆ XML-based queries
- ◆ Developer's Guide: Chapter 5
- ◆ XML schema
- ◆ Socket server
 - Host: `umlsks.nlm.nih.gov`
 - Port: 8042

Developer's Guide



UMLS Knowledge Sources

UMLS® Version 4.2.2 UMLS Releases: 2002 2002AB 2002AC 2002AD

Listview

About the UMLS®

- ▶ [Home](#)
- ▶ [Overview](#)
- ▶ [Frequently Asked Questions](#)
- ▶ [Edit Views/Profile](#)
- Downloads**
- ▶ [UMLS Knowledge Sources](#)
- ▶ [Developer's API](#)
- Documentation**
- ▶ [User's Guide](#)
- ▶ [Developer's Guide](#)
 - 1. Introduction
 - 2. Installing the UMLS®S
 - 3. Building UMLS®S Software Applications
 - 4. Using the XML Query Facility
 - 5. Using the UMLS®S Socket Server
- ▶ [UMLS Documentation Set](#)
- Resources**
- ▶ [NLP & Lexical Resources](#)
- ▶ [Semantic Network Resources](#)
- ▶ [Manuals](#)

[Print/Text Version Table of Contents](#)

This guide describes the installation of the **UMLS Knowledge Source Server (UMLS®S)**.

Audience

The audience for this guide is developers of applications that use the **UMLS Knowledge Sources**.

Release Notes

Please refer to the **Release Bulletin** for the latest version of the UMLS®S.

How to Use This Guide

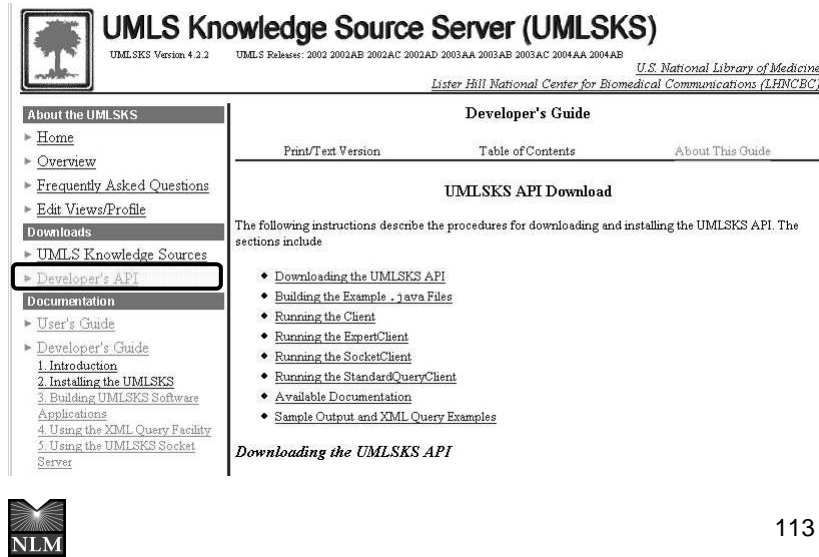
This manual contains the following:

- **Chapter 1 - Introduction** of the UMLS®S
- **Chapter 2 - Installing the instructions on installing a UMLS®S**
- **Chapter 3 - Building UMLS®S functions available to develop through another Java program**
- **Chapter 4 - Using the XML querying facility of the UMLS®S** be executed.
- **Chapter 5 - Using the UMLS®S socket server to pass UMLS®S command-line type queries**

Documentation

- ▶ User's Guide
- ▶ Developer's Guide
 - 1. Introduction
 - 2. Installing the UMLSKS
 - 3. Building UMLSKS Software
 - 4. Applications
 - 5. Using the XML Query Facility
 - 6. Using the UMLSKS Socket Server
- ▶ UMLS Documentation Set

Documentation Java API



UMLS Knowledge Source Server (UMLS SKS)
 UMLS SKS Version 4.2.2 UMLS Releases: 2002 2002AB 2002AC 2002AD 2003AA 2003AB 2003AC 2004AA 2004AB
 U.S. National Library of Medicine
 Lister Hill National Center for Biomedical Communications (LHNC/BC)

About the UMLS SKS

- Home
- Overview
- Frequently Asked Questions
- Edit Views/Profile
- Downloads
- UMLS Knowledge Sources
- Developer's API**

Documentation

- User's Guide
- Developer's Guide
 - 1. Introduction
 - 2. Installing the UMLS SKS
 - 3. Building UMLS SKS Software Applications
 - 4. Using the XML Query Facility
 - 5. Using the UMLS SKS Socket Server

Developer's Guide


Print/Text Version Table of Contents About This Guide

UMLS SKS API Download

The following instructions describe the procedures for downloading and installing the UMLS SKS API. The sections include:


- Downloading the UMLS SKS API
- Building the Example - java Files
- Running the Client
- Running the ExpertClient
- Running the SocketClient
- Running the StandardQueryClient
- Available Documentation
- Sample Output and XML Query Examples

Downloading the UMLS SKS API



113

Documentation Javadocs



All Classes

Packages

- gov.nih.nlm.kss.api
- gov.nih.nlm.kss.example
- gov.nih.nlm.kss.models
- gov.nih.nlm.kss.models.lex
- gov.nih.nlm.kss.models.meta
- gov.nih.nlm.kss.models.meta.assoc
- gov.nih.nlm.kss.models.meta.attr
- gov.nih.nlm.kss.models.meta.concept
- gov.nih.nlm.kss.models.meta.context
- gov.nih.nlm.kss.models.meta.cooccurrence
- gov.nih.nlm.kss.models.meta.deltas
- gov.nih.nlm.kss.models.meta.locator
- gov.nih.nlm.kss.models.meta.meshentry
- gov.nih.nlm.kss.models.meta.relation
- gov.nih.nlm.kss.models.meta.source
- gov.nih.nlm.kss.models.sem
- gov.nih.nlm.kss.models.sem.rels
- gov.nih.nlm.kss.models.sem.units
- gov.nih.nlm.kss.query
- gov.nih.nlm.kss.query.lex

All Classes

- AdiEntry
- AdvEntry
- AssocExprsExecutor
- AssociatedExp
- AssociatedExpVector
- AssociativeRelation
- AssociativeRelationVector
- AssociativeRelExistence
- Attr
- AttributeContext
- AttributeValue
- AttrVector
- AuxEntry
- BasicConceptPropsExecutor
- CatEntry
- Client
- ClientV2_1
- ClientV3_0

Overview Package Class Use Tree Deprecated Index Help

PREV NEXT FRAMES NO FRAMES

Packages

Package	Class	Use	Tree	Deprecated	Index	Help
gov.nih.nlm.kss.api						
gov.nih.nlm.kss.example						
gov.nih.nlm.kss.models						
gov.nih.nlm.kss.models.lex						
gov.nih.nlm.kss.models.meta						
gov.nih.nlm.kss.models.meta.assocExp						
gov.nih.nlm.kss.models.meta.attribute						
gov.nih.nlm.kss.models.meta.concept						
gov.nih.nlm.kss.models.meta.context						
gov.nih.nlm.kss.models.meta.cooccurrence						
gov.nih.nlm.kss.models.meta.deltas						
gov.nih.nlm.kss.models.meta.locator						
gov.nih.nlm.kss.models.meta.meshentry						
gov.nih.nlm.kss.models.meta.relation						
gov.nih.nlm.kss.models.meta.source						
gov.nih.nlm.kss.models.sem						
gov.nih.nlm.kss.models.sem.rels						
gov.nih.nlm.kss.models.sem.units						
gov.nih.nlm.kss.query						
gov.nih.nlm.kss.query.lex						

114

Sample XML query (1) Current version

```
<?xml version="1.0"?>  
<getCurrentUMLSVersion version="1.0"/>
```



```
<?xml version="1.0"?>  
<CurrentUMLSYear version="1.0">  
  2004AB  
</CurrentUMLSYear>
```



115

Sample XML query (2) Concepts by string

```
<?xml version="1.0"?>  
<findCUI version="1.0">  
  <conceptName>appendectomy</conceptName>  
  <language>ENG</language>  
  <exact/>  
  <noSuppressibles/>  
</findCUI>
```



```
<?xml version="1.0"?>  
<ConceptIdCollection version="1.0">  
  <release>2004AB</release>  
  <conceptId>  
    <cui>C0003611</cui>  
    <cn>Appendectomy</cn>  
  </conceptId>  
</ConceptIdCollection>
```



116

Sample XML query (3) Concepts properties

```
<?xml version="1.0"?>
<getSemanticType version="1.0">
<cu>C0033572</cu>
</getSemanticType>
```



```
<?xml version="1.0"?>
<SemanticTypeCollection version="1.0">
<release>2004AB</release>
<cu>C0033572</cu>
<cn>Prostate</cn>
  <semanticType>
    <tui>T023</tui>
    <sty>Body Part, Organ,
      or Organ Component</sty>
  </semanticType>
</SemanticTypeCollection>
```

117

Sample XML query (4) Relationships

```
<?xml version="1.0"?>
<getRelations version="1.0">
<cu>C0033572</cu>
<rel>RO</rel>
</getRelations>
```



```
<?xml version="1.0"?>
<RelationCollection version="1.0">
[... ]
  <relation>
    <rel>RO</rel>
    <cu2>C0005001</cu2>
    <cn2>Benign prostatic hyperplasia</cn2>
    <rela>has_finding_site</rela>
    <sab>SNOMEDCT</sab>
    <sl>SNOMEDCT</sl>
  </relation>
[... ]
```

118

Sample XML query (5) All semantic type IDs

```
<?xml version="1.0"?>
<listSemTypeIds version="1.0">
</listSemTypeIds>
```



```
<?xml version="1.0"?>
<SemNetIdCollection version="1.0">
  <release>2004AB</release>
  <semnetId>
    <name>Acquired Abnormality</name>
    <ui>T020</ui>
    <semtypes/>
  </semnetId>
  <semnetId>
    <name>Activity </name>
    <ui>T052</ui>
    <semtypes/>
  </semnetId>
```

[...]



119

Performing XML queries from UMLS SKS



120

Performing XML queries from UMLSKS

UMLS Knowledge Source Server (UMLSKS)
UMLSKS Version 4.2.2 UMLS Release: 2002 2002AB 2002AC 2002AD 2002AA 2002AB 2002AC 2002AA 2004AB 2004AB
Metathesaurus Semantic Network SPECIALIST Lexicon Logout

Metathesaurus XML Query
The UMLSKS provides a facility for interpreting two forms of XML:

- Standard API commands
- Specialized requests

"Standard" API commands are a set of XML documents in which each of the standard API commands (all but the query) are represented in the XML. For examples on the structure of this type of document, see the [examples](#).

"Specialized" requests are those XML documents that are structured for use with the [Metathesaurus](#) query method. These types of queries are described in Chapter 4 of the UMLSKS User's Guide. Users of this type of query must be familiar with the internal database structure and how table data are related to each other.

Either typepaste the XML query into the text entry area or browse your local file system to locate an XML query file to upload to the UMLSKS. Once the query is entered, click the **Find** button to execute the query.

Enter the XML query:

Find

Browse...

```
<?xml version="1.0"?>
<getRelations>
<cu>C0033572</cu>
<rel>RO</rel>
</getRelations>
```

121

Part II How to use the UMLS?

*(3) Installing the UMLS locally and
Customizing the Metathesaurus
using MetamorphoSys*

What is MetamorphoSys?

- ◆ Tool distributed with the UMLS
- ◆ Multi-platform Java software
- ◆ The UMLS installation and customization wizard
 - Installs Knowledge Sources to local storage
 - Subsets and customizes a local Metathesaurus



123

Using MetamorphoSys

- ◆ Simple to use
- ◆ Screens and tabs lead you through process
- ◆ Installs NLM data format files to local storage



124

Why use MetamorphoSys?

Customize the Metathesaurus

- ◆ To remove terminology that is unhelpful, or even harmful, to your needs and purposes
- ◆ To comply with terms of license agreement



125

Why use MetamorphoSys?

Changing Default Settings

- ◆ To alter the preferred name
- ◆ To alter suppressibility of specific source term types



126

Customization is Critical

- ◆ Requires a clear understanding of:
 - Characteristics of source vocabularies
 - License arrangements
 - User's functional requirements
 - User's purpose and perspective
- ◆ Technical expertise

**... and requires a
multidisciplinary technical team**



127

Machine Requirements

- ◆ A fast CPU – 1 GHz or higher
- ◆ 1 GB RAM recommended (512 MB min.)
- ◆ 6x (or better) DVD drive
- ◆ 22 GB minimum free disk space
- ◆ Runs on Sun Solaris 8 & 9, Windows XP, NT, and 2000, Linux, and Mac
- ◆ 1-10 hours run time on platforms tested



128

Download from UMLSKS ...

- ◆ High speed Internet connection required
- ◆ Read the README file for the release
- ◆ 2004AB UMLS Files
 - 2004AB.CHK
 - 2004AB.MD5
 - 2004ab-1-meta.nlm
 - 2004ab-2-meta.nlm
 - 2004ab-3-meta.nlm
 - mmsys.zip
 - Copyright_Notice.txt
 - README.txt



Please README!

129

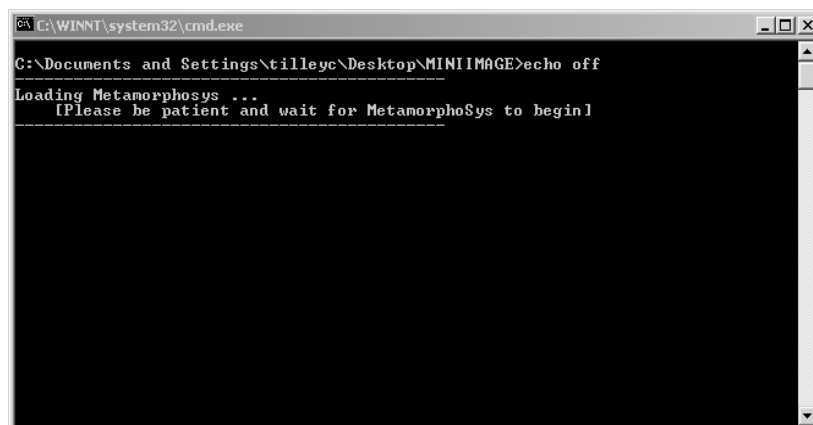
...or DVD?

- ◆ Order at: umls_support@nlm.nih.gov
- ◆ **Include your license number**
- ◆ Run MetamorphoSys from DVD
 - Windows
 - Autorun; or go to root directory and click on “windows_mmsys.bat”
 - Linux, Solaris, Macintosh
 - open a terminal window, change to the root directory and type appropriate command: `./linux_mmsys.sh`, `./solaris_mmsys.sh`, `./macintosh_mmsys.sh`



130

Be patient! A lot of software must load.

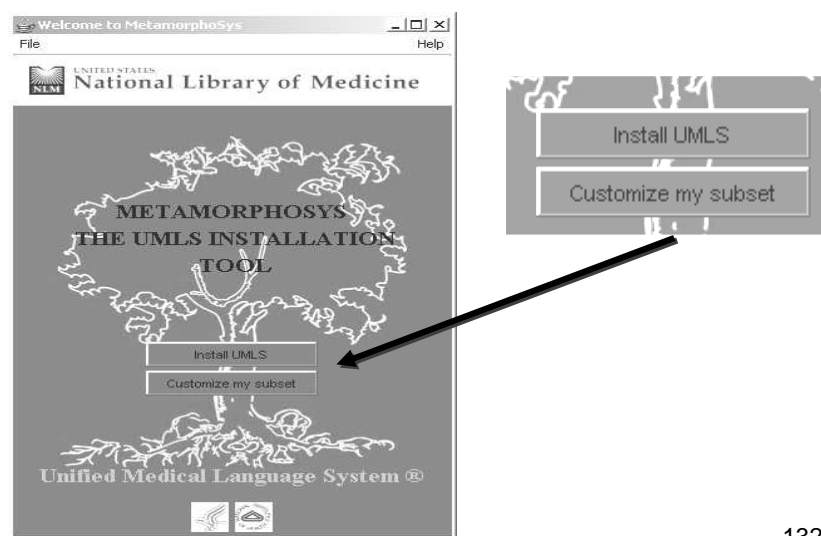


```
C:\WINNT\system32\cmd.exe
C:\Documents and Settings\tilleyc\Desktop\MINIIMAGE>echo off
Loading Metamorphosys ...
[Please be patient and wait for MetamorphoSys to begin]
```



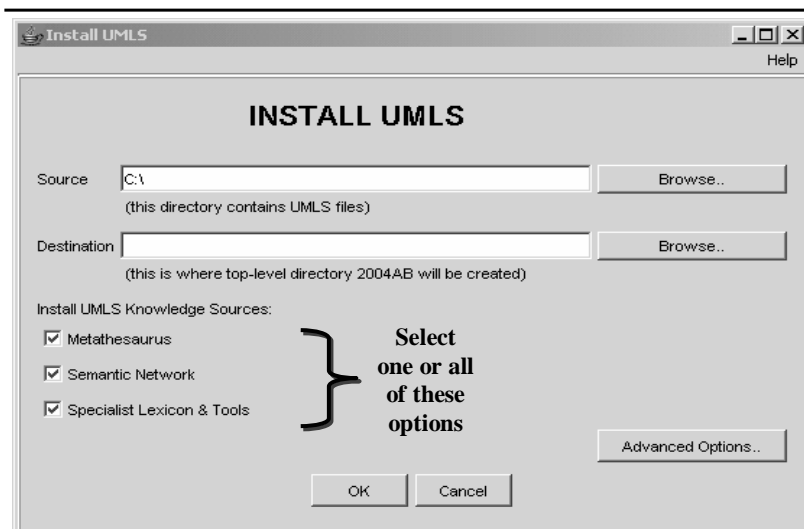
131

Welcome Screen



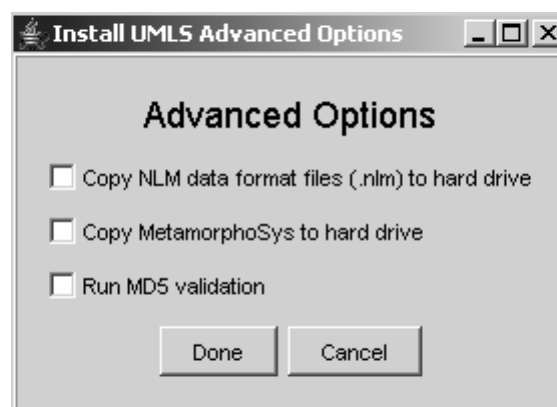
132

Install UMLS



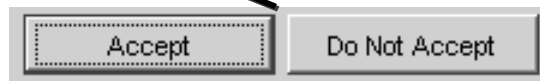
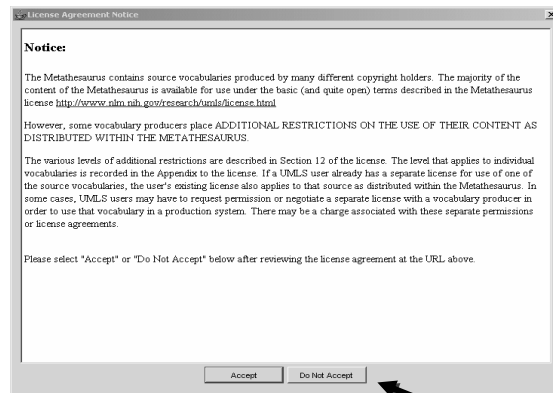
133

Install UMLS Advanced Options

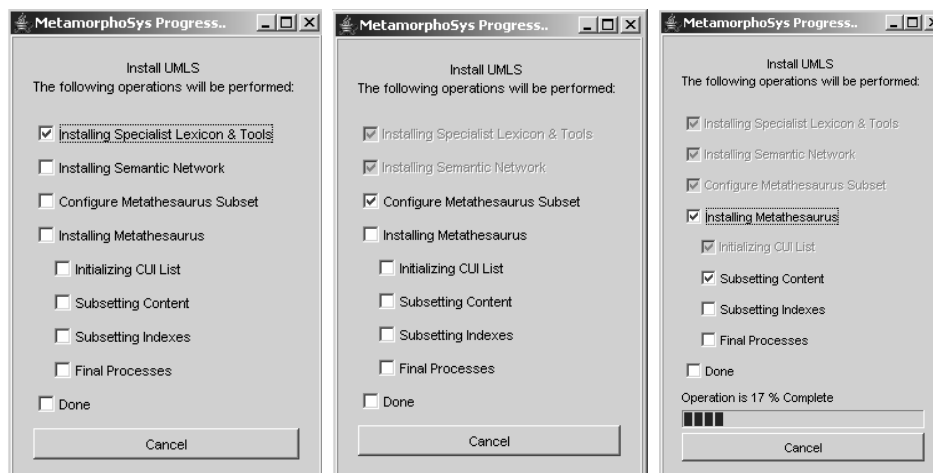


134

UMLS License Notice

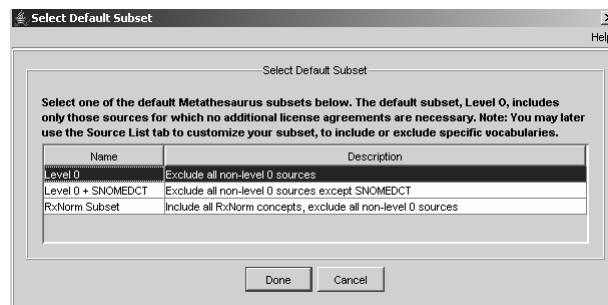


Installation progress monitor



136

Select a default subset



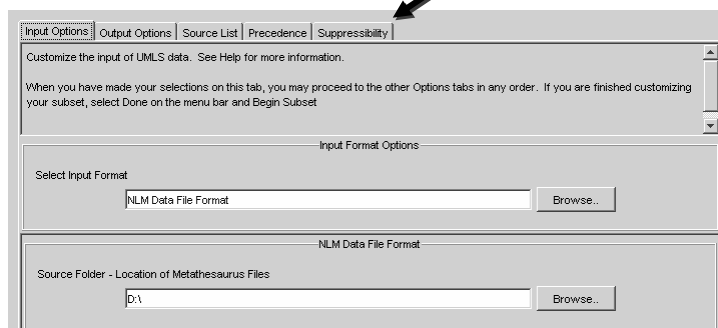
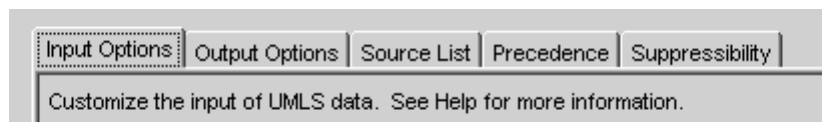
Level 0 → no separate additional license agreements

Level 0 + SNOMEDCT → Non-U.S. users must have separate license agreements

RxNorm → no separate additional license agreements

137

Input Options Tab



138

Output Options Tab

Input Options **Output Options** Source List Precedence Suppressibility

Select data output options for your local application. See Help for more information.

◆ Select Output Format

◆ Subset Folder - Location of Subset Files

◆ ☒ Remove records containing extended UTF-8 characters.

◆ ☐ Truncate long fields to 4000 characters.

◆ ☐ Output versioned source abbreviations rather than versionless source abbreviations.

◆ ☐ Exclude MRCXT.RRF from the subset.

◆ ☐ Write Oracle load script.

◆ ☐ Write Mysql load script.

139

Source List Tab

Input Options Output Options **Source List** Precedence Suppressibility

Include or exclude source vocabularies for your Metathesaurus subset. See Help

Input Options Output Options Source List Precedence Suppressibility

Include or exclude source vocabularies for your Metathesaurus subset. See Help for more information.

Hold down the <Ctrl> key to select multiple rows.

To reset to the default Source List, click on Reset on the menu bar, and select Reset Source List.

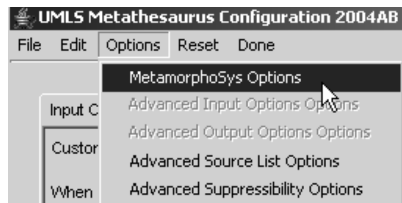
Sources to Exclude

Full Source Name	Source Abbreviation	Source Family	Language	Level
AIRHEUM, 1993	AIR93	AIR	ENG	0
Alternative Billing Concepts	ALT2003	ALT	ENG	3
Alcohol and Other Drug Thesaurus, 2000	AOD2000	AOD	ENG	0
Beth Israel Vocabulary, 1.0	BI98	BI	ENG	2
Canonical Clinical Problem Statement System, 1999	CCPSS99	CCPSS	ENG	3
Clinical Classifications Software, 2003	CCS2003	CCS	ENG	0
Current Dental Terminology (CDT), 4	CDT4	CDT	ENG	3

Highlighted rows are excluded from the subset.

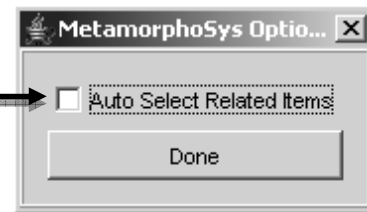
140

MetamorphoSys Option Tab

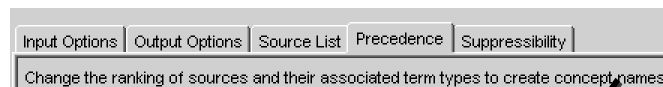


Source list behavior can be changed using the MetamorphoSys Option Tab

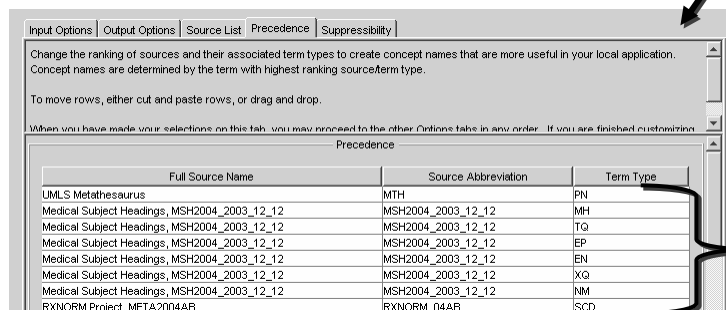
If you wish to Auto Select Related Items check this box



Precedence Tab



- Ranks names by types of terms within sources
- Highest ranking name determines the Preferred Name



Cut and paste rows to alter the preferred name
142

Suppressibility Tab

Input Options | Output Options | Source List | Precedence | **Suppressibility**

See Help for more information.

When you have made your selections on this tab, you may proceed to the other Options tabs in any order. If you are finished customizing your subset, select Done on the menu bar and Begin Subset.

International Classification of Primary Care, 1993	ICPC93	CP
International Classification of Primary Care, 1993	ICPC93	CS
International Classification of Primary Care, 1993	ICPC93	CX
International Classification of Primary Care, 1993	ICPC93	HT
International Classification of Primary Care, 1993	ICPC93	PC
International Classification of Primary Care, 1993	ICPC93	PS
International Classification of Primary Care, 1993	ICPC93	PT
International Classification of Primary Care, 1993	ICPC93	PX
ICPC, Basque Translation, 1993	ICPCBAQ_1993	CP

Highlighted source term types will be marked as suppressible



143

File menu

UMLS Metathesaurus Configuration 2004AB

File | Edit | Options | Reset | Done | Help

- Enable/Disable Filter Ctrl+O
- Import Filter... Ctrl+I
- New Configuration... Ctrl+N
- Open Configuration... Ctrl+O
- Save Configuration... Ctrl+S
- Exit Ctrl+Q

Source List | Precedence | Suppressibility

See Help for more information.

When you have made your selections on this tab, you may proceed to the other Options tabs in any order. If you are finished customizing your subset, select Done on the menu bar and Begin Subset.

Input Format Options

Select Input Format

NLM Data File Format [Browse...]

NLM Data File Format

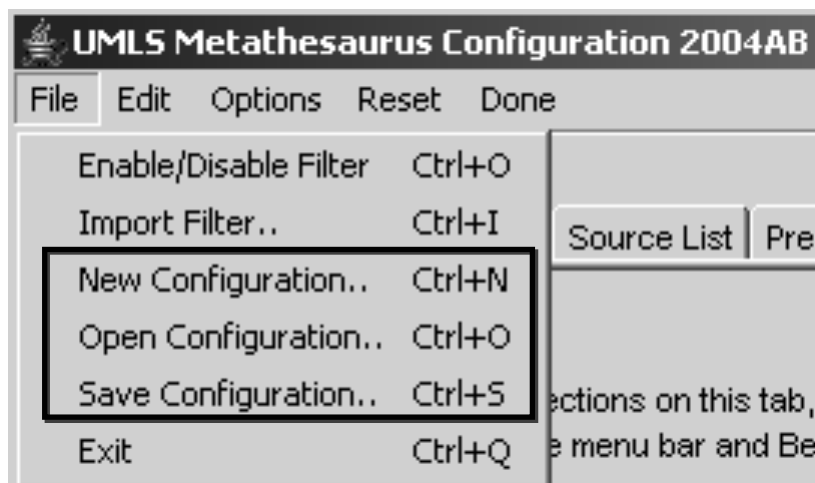
Source Folder - Location of Metathesaurus Files

C:\Documents and Settings\jleey\Desktop\MINIIMAGE [Browse...]



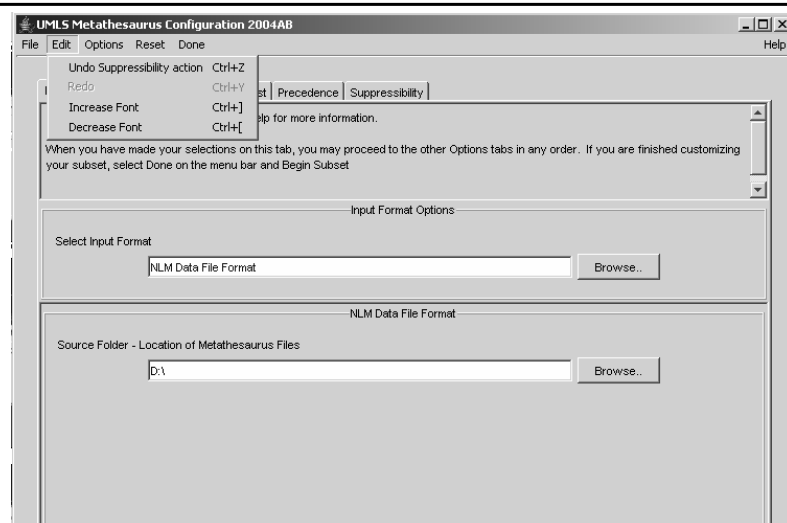
144

File menu



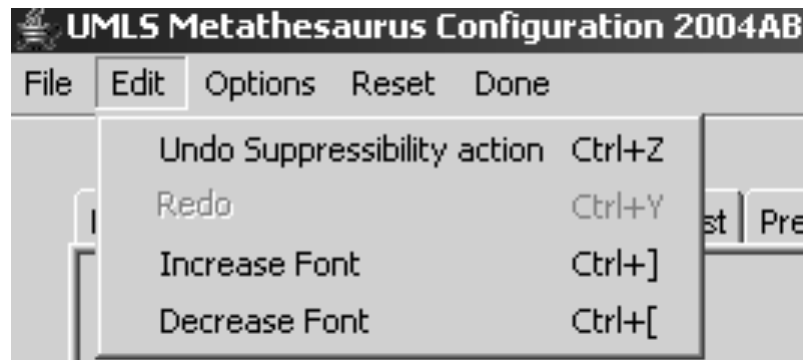
145

Edit menu



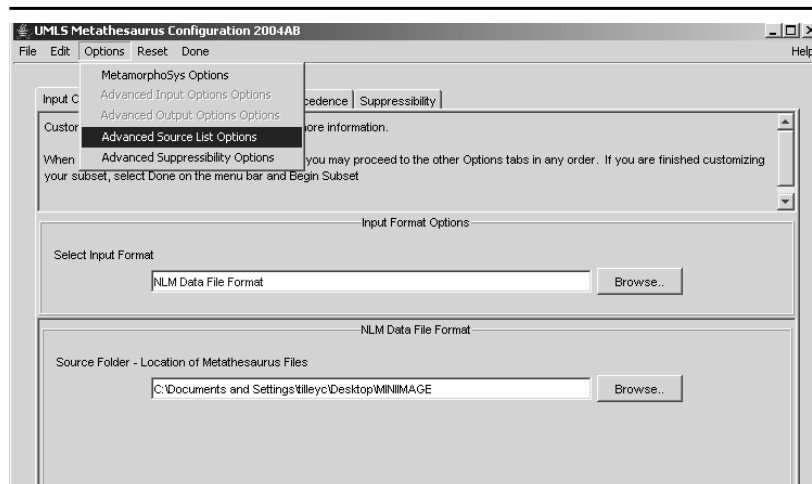
146

Edit menu



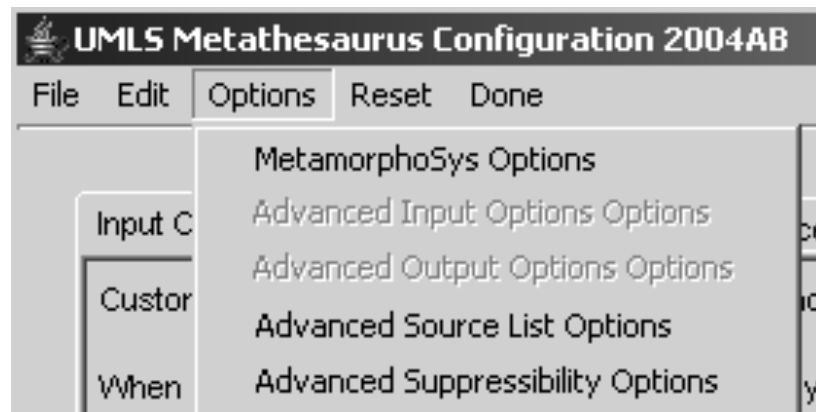
147

Options menu



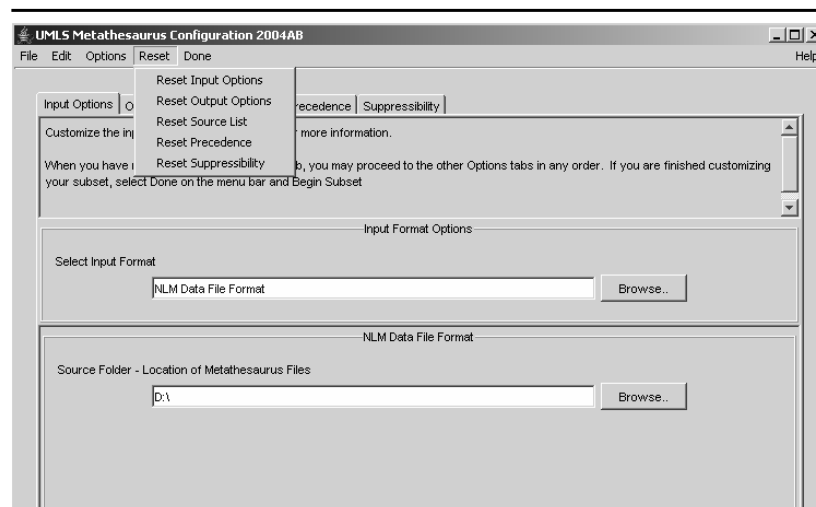
148

Options menu



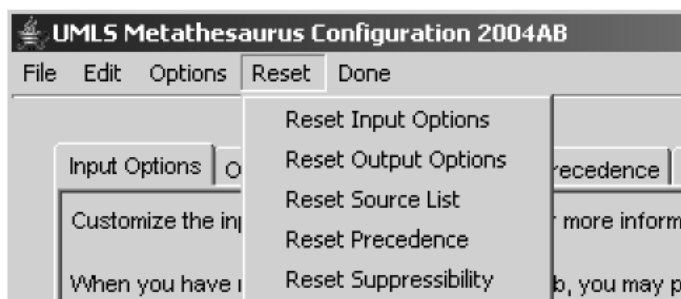
149

Reset menu



150

Reset menu

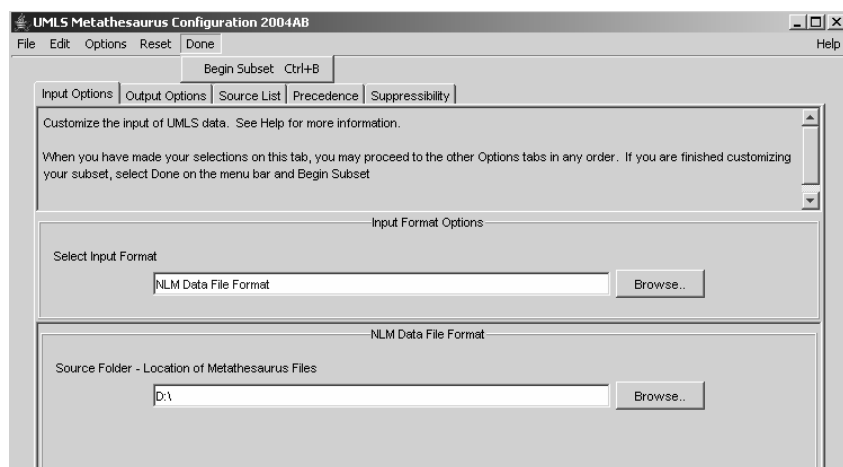


- ◆ Returns all filters to default selections
- ◆ Default selections in “mmsys.prop.default file” in config folder
- ◆ mmsys.prop.default contains properties in last run



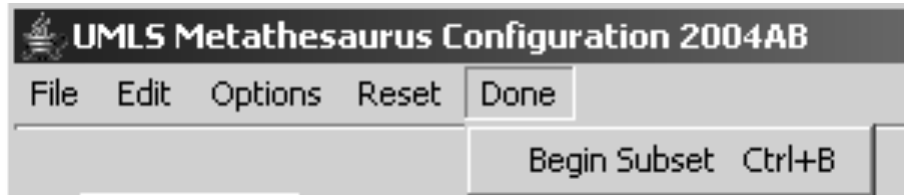
151

Done – Begin Subset



152

Done – Begin Subset



- ◆ Complete configuration options
- ◆ Done menu
- ◆ Begin Subset



153

How MetamorphoSys Works

- ◆ Removes all information from relational files in excluded vocabularies
 - atoms, strings, relationships, attributes, mappings, etc.
- ◆ Applies additional options selected by user
 - such as adding source term suppressibility or altering precedence
- ◆ Produces a full set of Metathesaurus files
 - relational files with customized data
 - reflecting other user criteria



154

MetamorphoSys log

```

mmsys.log - Notepad
File Edit Format View Help
MetamorphoSys Version:.....5.21
MetamorphoSys Build Date:.....2004_08_30_14_47_11
UMLS Build Date:.....2004_07_12_09_57_26
Release Version:.....2004AB
Release Date:.....20040720
Release Description:.....July 2004 Release
Metathesaurus Source paths:.....C:\UMLS\DVDIMAGE
Subsetted Metathesaurus folder:.....C:\UMLS\DVDIMAGE\2004AB\META
Start at:.....Wed Sep 01 13:04:18 EDT 2004
Initialize CUI List completed:.....Wed Sep 01 13:06:20 EDT 2004
Subset Metathesaurus completed:.....Wed Sep 01 14:13:02 EDT 2004
Subset Index Files completed:.....Wed Sep 01 14:21:11 EDT 2004
Subset Release Metadata completed:.....Wed Sep 01 14:21:17 EDT 2004
Finished at:.....Wed Sep 01 14:22:48 EDT 2004
Concepts in source:.....1078246
Concepts in subset:.....1078246
Time elapsed:.....01:18:29

```



155

MetamorphoSys log

```

mmsys.log - Notepad
File Edit Format View Help
-----
Metathesaurus Output: Rich Release Format
Long fields were not truncated.
Source Abbreviations were written out with a versionless (root) representation.
Fields containing UTF-8 characters were not removed.

Excluded Sources
<none>

Kept Sources
AI/RHEUM, 1993
Alternative Billing Concepts
Alcohol and other Drug Thesaurus, 2000
Beth Israel Vocabulary, 1.0
Canonical Clinical Problem Statement System, 1999
Clinical Classifications Software, 2003
Current Dental Terminology (CDT), 4
COSTAR, 1989-1995
Medical Entities Dictionary, 2003
Physicians' Current Procedural Terminology, Spanish Translation,...
Physicians' Current Procedural Terminology, 2004
CRISP Thesaurus, 2004
COSTART, 1995
Diseases Database, 2000
German translation of ICD10, 1995
German translation of UMDNS, 1996

AIR93
ALT2003
AOD2000
BI98
CCP5599
CCS2003
CDT4
COSTAR_89-95
CPM2003
CPT01SP
CPT2004
CSP2004
CST95
DDB00
DMDICD10_1995
DMDUMD_1996

```

Kept Sources

Output directory contents

Name	Size	Type
CHANGE		File Folder
indexes		File Folder
release.dat	1 KB	DAT File
config.prop	8 KB	PROP File
AMBIGLUI.RRF	1,225 KB	RRF File
AMBIGSUI.RRF	955 KB	RRF File
MRCOC.RRF	809,207 KB	RRF File
MRCOLS.RRF	21 KB	RRF File
MRCONSO.RRF	596,528 KB	RRF File
MRCUI.RRF	9,221 KB	RRF File
MRCXT.RRF	9,391,778 KB	RRF File
MRDEF.RRF	17,172 KB	RRF File
MRDOC.RRF	88 KB	RRF File
MRFILES.RRF	4 KB	RRF File
MRHIER.RRF	899,786 KB	RRF File
MRHIST.RRF	70,843 KB	RRF File
MRMAP.RRF	9,362 KB	RRF File

Summary

UMLS Overview

◆ UMLS = 3 Knowledge Sources

- Metathesaurus
- Semantic Network
- SPECIALIST Lexicon and Lexical Tools

◆ MetamorphoSys

- installs
- customizes

◆ UMLSKS

- remote access
- resources and documentation



159

Questions

Documentation and Support

UMLS documentation and support

- ◆ UMLS homepage <http://umlsinfo.nlm.nih.gov/>
 - with links to all other UMLS information
- ◆ UMLSKS homepage <http://umlsks.nlm.nih.gov/>
 - with links to the User's and Developer's guides
- ◆ Email address for support custserv@nlm.nih.gov



162

Appendix 1

UMLS files in Rich Release Format

MRCONSO (sample rows 1..5)

(2004AB)

1	2	3	4	5	6	7	8	9	10	11
CUI	LAT	TS	LUI	STT	SUI	ISPREF	AUI	SAUI	SCUI	SDUI
1 C0001403	ENG	P	L0001403	PF	S0354372	Y	A4367951			
2 C0001403	ENG	P	L0001403	PF	S0354372	N	A2922421	485624014	363732003	
3 C0001403	ENG	P	L0001403	VC	S0010794	Y	A0019740		M0000346	D000224
4 C0001403	ENG	S	L0494851	PF	S2164152	N	A2018589			
5 C0001403	FRE	P	L3246333	PF	S3773545	Y	A3996251			D000224

12	13	14	15	16	17	18
SAB	TTY	CODE	STR	SRL	SUPPRESS	CVF
1 MTH	PN	NOCODE	Addison's disease	0	N	
2 SNOMEDCT	PT	363732003	Addison's disease	4	N	
3 MSH	MH	D000224	Addison's Disease	0	N	
4 MDR	LT	10052381	Primary adrenal insufficiency	3	N	
5 MSHFRE	MH	D000224	Addison, maladie	3	N	



Appendix - Metathesaurus relational files (RRF)

164

MRCONSO (sample rows 6..10)

(2004AB)

1	2	3	4	5	6	7	8	9	10	11
CUI	LAT	TS	LUI	STT	SUI	ISPREF	AUI	SAUI	SCUI	SDUI
6 C0001403	FRE	S	L1272481	PF	S1514427	Y	A1464383			
7 C0001403	GER	P	L1229627	PF	S1471573	Y	A4030156			D000224
8 C0001403	GER	S	L1239271	PF	S1481217	Y	A4034094			D000224
9 C0001403	JPN	P	L3437833	PF	S3965327	Y	A4264008			D000224
10 C0001403	JPN	S	L3465347	PF	S3992841	Y	A4291522			D000224

12	13	14	15	16	17	18
SAB	TTY	CODE	STR	SRL	SUPPRESS	CVF
6 WHOFRE	IT	0410	MALADIE D'ADDISON	2	N	
7 MSHGER	MH	D000224	Addison-Krankheit	3	N	
8 MSHGER	SY	D000224	Bronzehautkrankheit	3	N	
9 MSHJPN	MH	D000224	Addison病	3	N	
10 MSHJPN	SY	D000224	副腎性黒皮症	3	N	



Appendix - Metathesaurus relational files (RRF)

165

MRCONSO (sample rows 11-13)

(2004AB)

1	2	3	4	5	6	7	8	9	10	11
CUI	LAT	TS	LUI	STT	SUI	ISPREF	AUI	SAUI	SCUI	SDUI
11 C0001403	POR	P	L3302998	PF	S3831123	N	A6382080			
12 C0001403	RUS	P	L3336992	PF	S3864473	Y	A4157629			
13 C0001403	SPA	P	L1226877	PF	S1468823	Y	A1419475			

12	13	14	15	16	17	18
SAB	TTY	CODE	STR	SRL	SUPPRESS	CVF
11 MDRPOR	LT	1001130	Doença de Addison	3	N	
12 MSHRUS	MH	D000224	АДДИСОНОВА БОЛЕЗНЬ	3	N	
13 WHOSPA	IT	0410	ADDISON, ENFERMEDAD	3	N	



Appendix - Metathesaurus relational files (RRF)

166

MRHIER (sample rows)

(2004AB)

	1	2	3	4	5	6
	CUI	AUI	CXN	PAUI	SAB	RELA
1	C0001403	A0019740	1	A0020270	MSH	
2	C0001403	A0019740	2	A0028022	MSH	
3	C0001403	A0019743	3	A1988358	PSY	member_of_cluster
4	C0001403	A2922421	1	A3307650	SNOMEDCT	isa
5	C0001403	A2922421	2	A3307650	SNOMEDCT	isa

	7	8	9
	PTR	HCD	CVF
1	A0434168.A2367943.A2366890.A0135391.A0054194.A0020267.A0020270	C19.053.264.263	
2	A0434168.A2367943.A2366890.A0135391.A0072566.A0028022	C20.111.163	
3	A0449751.A1988279.A1988358		
4	A3684559.A3886745.A2880798.A3398606.A3399335.A3398961.A2872359.A2872360.A3307650		
5	A3684559.A3886745.A2880798.A3398606.A3399335.A3398961.A2872359.A2933400.A2989549.A3307650		



Appendix - Metathesaurus relational files (RRF)

167

MRREL (sample rows)

(2004AB)

	1	2	3	4	5	6	
	CUI1	AUI1	STYPE1	REL	CUI2	AUI2	STYPE2
1	C0001403		CUI	RB	C0001621		CUI
2	C0001403	A0019738	AUI	SY	C0001403	A0049628	AUI
3	C0001403	A2922421	SCUI	CHD	C0085859	A2977940	SCUI
4	C0001403	A6326321	SCUI	RO	C0688490	A6339383	SCUI
5	C0001403	A0019743	AUI	PAR	C0935495	A1988358	AUI

	7	8	9	10	11	12	13	14	15
	RELA	RUI	SRUI	SAB	SL	RG	DIR	SUPPRESS	CVF
1		R02837989		MTH			N	N	
2		R18849683		MSH	MSH			N	
3	isa	R19859511	1658795027	SNOMEDCT	SNOMEDCT	0	Y	N	
4	may_treat	R27600039		NDFRT	NDFRT			N	
5	has_member	R08110401		PSY	PSY			N	



Appendix - Metathesaurus relational files (RRF)

168

MRDEF

(2004AB)

CUI	AUI	ATUI	SATUI	SAB	DEF	SUPPRESS	CVF
C0001403	A0019740	AT15061584		MSH	A disease characterized by hypotension, weight loss, anorexia, weakness, and sometimes a bronze-like melanotic hyperpigmentation of the skin. It is due to tuberculosis- or autoimmune-induced disease (hypofunction) of the adrenal glands that results in deficiency of aldosterone and cortisol. In the absence of replacement therapy, it is usually fatal.	N	



Appendix - Metathesaurus relational files (RRF)

169

MRSAT (sample rows)

(2004AB)

	1	2	3	4	5	
	CUI	LUI	SUI	METAUI	SType	CODE
1	C0001403	L0001403	S0010792	A0019738	AUI	D000224
2	C0001403	L0001403	S0010794	A6326321	SCUI	C712
3	C0001403	L0001403	S0354372	A2922421	SAUI	363732003
4	C0001403			R15742591	SRUI	
5	C0001403				CUI	

	7	8	9	10	11	14	15
	ATUI	SATUI	ATN	SAB	ATV	SUPPRESS	CVF
1	AT15321482		DID	MSH	D000224	N	
2	AT33411754		MESH_UI	NDFRT	D000224	N	
3	AT24166602		DESCRIPTION STATUS	SNOMEDCT	0	N	
4	AT27438950		REFINABILITY	SNOMEDCT	0	N	
5	AT02925340		ST	MTH	R	N	



Appendix - Metathesaurus relational files (RRF)

170

MRSTY

(2004AB)

CUI	TUI	STN	STY	ATUI	CVF
C0001403	T047	B2.2.1.2.1	Disease or Syndrome	AT17683850	



Appendix - Metathesaurus relational files (RRF)

171

MRHIST (sample rows)

(2004AB)

	1	2	3	4	5
	CUI	SOURCEUI	SAB	SVER	CHANGETYPE
1	C0001403	1198962018	SNOMEDCT	20020731	0
2	C0001403	1212124016	SNOMEDCT	20020731	0
3	C0001403	1490869013	SNOMEDCT	20030131	0
4	C0001403	363732003	SNOMEDCT	20020129	0
5	C0001403	373662000	SNOMEDCT	20020731	0



	6	7	8	9
	CHANGEKEY	CHANGEVAL	REASON	CVF
1	DESCRIPTIONSTATUS	0		
2	DESCRIPTIONSTATUS	0		
3	DESCRIPTIONSTATUS	0		
4	CONCEPTSTATUS	0		
5	CONCEPTSTATUS	0		



Appendix - Metathesaurus relational files (RRF)

172

Appendix 2

UMLS files in Original Release Format

MRCON Concepts

(2003AA)

CUI	LAT	TS	LUI	STT	SUI	STR	LRL
C0001403	ENG	P	L0001403	PF	S0010794	Addison's Disease	0
C0001403	ENG	P	L0001403	VC	S0352253	ADDISON'S DISEASE	0
C0001403	ENG	P	L0001403	VO	S0010792	Addison Disease	0
C0001403	ENG	P	L0001403	VO	S0033587	Disease, Addison	0
C0001403	ENG	P	L0001403	VO	S0469271	Addison's disease, NOS	3
C0001403	ENG	S	L0278071	PF	S0352321	ADRENAL INSUFFICIENCY (ADDISON'S DISEASE)	0
C0001403	ENG	S	L0278422	PF	S0352329	ADRENOCORTICAL INSUFFICIENCY, PRIMARY FAILURE	0
C0001403	ENG	S	L0367999	PF	S0469267	Addison melanoderma	3
C0001403	ENG	S	L0368000	PF	S0496840	Melasma addisonii	3
C0001403	ENG	S	L0368398	PF	S0506528	Primary adrenal deficiency	3
C0001403	ENG	S	L0373744	PF	S0471237	Asthenia pigmentosa	3
C0001403	ENG	S	L0377831	PF	S0473611	Bronzed disease	3
C0001403	ENG	S	L0494940	PF	S0718028	Primary adrenocortical insufficiency	3
C0001403	ENG	S	L0494937	PF	S0718027	Primary adrenocortical insuff	3
C0001403	FIN	P	L1510041	PF	S1805950	Addisonin tauti	3
C0001403	FRE	S	L1272481	PF	S1514427	MALADIE D'ADDISON	2
C0001403	GER	P	L1229627	PF	S1471573	Addison-Krankheit	3
C0001403	GER	S	L1288823	PF	S1530769	Primäre Nebennierenrindeninsuffizienz	1
C0001403	ITA	P	L1276837	PF	S1518783	Morbo di Addison	3
C0001403	POR	P	L0324623	PF	S0432928	DOENÇA DE ADDISON	2
C0001403	RUS	P	L0889403	PF	S1093220	ADDISONOVA BOLEZN'	3
C0001403	SPA	P	L0342625	PF	S0450930	ENFERMEDAD DE ADDISON	3
[...]							



Appendix - Metathesaurus relational files (ORF)

174



MRSO Sources

(2003AA)

CUI	LUI	SUI	SAB	TTY	SCD	SRL
C0001403	L0001403	S0010792	MSH	EN	D000224	0
C0001403	L0001403	S0010794	MSH	MH	D000224	0
C0001403	L0001403	S0010796	MSH	PM	D000224	0
C0001403	L0001403	S0010796	PSY	PT	00810	3
C0001403	L0001403	S0033587	MSH	PM	D000224	0
C0001403	L0001403	S0220088	MSH	PM	D000224	0
C0001403	L0001403	S0352252	CCPSS	PT	0022753	3
C0001403	L0001403	S0352252	DXP	SY	NOCODE	0
C0001403	L0001403	S0352253	CST	GT	ADREN INSUFFIC	0
C0001403	L0001403	S0352253	WHO	IT	0410	2
C0001403	L0001403	S0354372	AOD	DE	0000005430	0
C0001403	L0001403	S0354372	CSP	PT	0060-3321	0
C0001403	L0001403	S0354372	LCH	PT	U000061	0
C0001403	L0001403	S0354372	MDR	LT	10001130	3
C0001403	L0001403	S0354372	RCD	PT	C1541	3
C0001403	L0001403	S0354372	SNM	SY	D-2332	3
C0001403	L0001403	S0365923	CST	GT	ADREN INSUFFIC	0
C0001403	L0001403	S0469271	SNMI	PT	DB-70620	3
C0001403	L0001403	S1619433	MDR	LT	10001130	3
C0001403	L0001403	S1911394	ICPC2P	PT	T99002	3
C0001403	L0001403	S1921523	MTHICD9	ET	255.4	0
C0001403	L0001403	S1932462	ICPC2P	SF	T99002	3

[...]



Appendix - Metathesaurus relational files (ORF)

175



MRDEF Definitions

(2003AA)

CUI	SAB	DEF
C0001403	MSH	A disease characterized by hypotension, weight loss, anorexia, weakness, and sometimes a bronze-like melanotic hyperpigmentation of the skin. It is due to tuberculosis- or autoimmune-induced disease (hypofunction) of the adrenal glands that results in deficiency of aldosterone and cortisol. In the absence of replacement therapy, it is usually fatal.

[...]



Appendix - Metathesaurus relational files (ORF)

176



MRSTY Semantic Types

(2003AA)

CUI	TUI	STY
C0001400	T040	Organism Function
C0001403	T047	Disease or Syndrome
C0001406	T083	Geographic Area
C0001407	T114	Nucleic Acid, Nucleoside, or Nucleotide
C0001407	T123	Biologically Active Substance
[...]		



Appendix - Metathesaurus relational files (ORF)

177



MRATX Associated Expressions

(2003AA)

CUI	SAB	REL	ATX
Closed fracture of malar and maxillary bones, NOS			
C0009045	MSH	RB	<Zygomatic Fractures> OR <Maxillary Fractures>
Unilateral congenital dislocation of hip			
C0009702	MSH	RB	<Hip Dislocation, Congenital> AND <Femur Head>/<abnormalities>
Suture of bladder			
C0010700	MSH	RB	<Bladder>/<surgery>
Corneal abrasion			
C0010032	MSH	RO	<Cornea>/<injuries>
CORRECTIVE LENS PROBLEM			
C0010099	MSH	RO	<Contact Lenses>/<adverse effects>
Chronic cough			
C0010201	MSH	SY	<Cough> AND <Chronic Disease>
Cyst and pseudocyst of pancreas			
C0010623	MSH	SY	<Pancreatic Cyst> OR <Pancreatic Pseudocyst>
Cystitis			
C0010692	LCH	RU	<Bladder>/<Inflammation>
[...]			



Appendix - Metathesaurus relational files (ORF)

178



MRCXT Contexts

(2003AA)

```

CUI          SUI          SAB  SCD      CXN  CXL  RNK   CXS          CUI2      HCD  REL  XC
C0001403|S0469271|SNMI|DB-70620|1|ANC|1|SNOMED International|C1140118|||
C0001403|S0469271|SNMI|DB-70620|1|ANC|2|DISEASES/DIAGNOSES|C0338067|||
C0001403|S0469271|SNMI|DB-70620|1|ANC|3|DISEASES OF THE END. SYSTEM|C0014130|||
C0001403|S0469271|SNMI|DB-70620|1|ANC|4|DISEASES OF THE ADRENAL GLANDS|C0001621|||
C0001403|S0469271|SNMI|DB-70620|1|CCP|Addison's disease, NOS|C0001403|DB-70620||

(* = C0001403|S0718028|ICD10)
*|E27.1|1|ANC|1|ICD..., Tenth Revision (ICD-10)|C1140143|||
*|E27.1|1|ANC|2|Endocrine, nutritional and metabolic diseases|C0694452|E00-E90.9||
*|E27.1|1|ANC|3|Disorders of other endocrine glands|C0178257|E20-E35.9||
*|E27.1|1|ANC|4|Other disorders of adrenal gland|C0494313|E27|||
*|E27.1|1|CCP|Primary adrenocortical insufficiency|C0001403|E27.1|||

(* = C0001403|S0010794|MSH)
*|D000224|1|ANC|1|MeSH|C1135584|||
*|D000224|1|ANC|2|MeSH Descriptors|C1135587|||
*|D000224|1|ANC|3|Index Medicus Descriptor|C1135589|||
*|D000224|1|ANC|4|Diseases (MeSH Category)|C0012674|C|||
*|D000224|1|ANC|5|Endocrine Diseases|C0014130|C19|||
*|D000224|1|ANC|6|Adrenal Gland Diseases|C0001621|C19.53|||
*|D000224|1|ANC|7|Adrenal Gland Hypofunction|C0001623|C19.53.264|||
*|D000224|1|CCP|Addison's Disease|C0001403|C19.53.264.263|||
*|D000224|1|SIB|Adrenoleukodystrophy|C0001661|C19.53.264.270|||
*|D000224|1|SIB|Hypoadosteronism|C0020595|C19.53.264.480|||

```



Appendix - Metathesaurus relational files (ORF)

179



MRSAT Simple concept attributes (2003AA)

```

CUI          LUI          SUI          SCD      ATN  SAB      ATV
C0001403|L0001403|S0010792|D000224|DID|MSH|D000224|
C0001403|L0001403|S0010792|D000224|EV|MSH|ADDISON DIS|
C0001403|L0001403|S0010792|D000224|MUI|MSH|M0000346|
C0001403|L0001403|S0010792|D000224|TH|MSH|UNK (19XX)|
C0001403|L0001403|S0010794|D000224|AN|MSH|an autoimmune dis with adrenal hypofunction|
C0001403|L0001403|S0010794|D000224|AQL|MSH|BL CF CI CL CN CO DH DI DT EC EH EM EN ...|
C0001403|L0001403|S0010794|D000224|DC|MSH|1|
C0001403|L0001403|S0010794|D000224|DID|MSH|D000224|
C0001403|L0001403|S0010794|D000224|EV|MSH|ADDISON DIS|
C0001403|L0001403|S0010794|D000224|MDA|MSH|19990101|
C0001403|L0001403|S0010794|D000224|MED1963|NLM-MED|*2|
C0001403|L0001403|S0010794|D000224|MED1963|NLM-MED|2|
[...]
C0001403|L0001403|S0010794|D000224|MED2002|NLM-MED|*19|
C0001403|L0001403|S0010794|D000224|MED2002|NLM-MED|23|
[...]
C0001403|L0001403|S0010794|D000224|MN|MSH|C19.53.264.263|
C0001403|L0001403|S0010794|D000224|MN|MSH|C20.111.163|
[...]
C0001403|L0001403|S0469271|DB-70620|SIC|SNMI|255.4|
[...]
C0001403| |||DA|MTH|19900930|
C0001403| |||MR|MTH|20021026|
C0001403| |||ST|MTH|R|

```



Appendix - Metathesaurus relational files (ORF)

180



MRRANK Name Ranking

(2003AA)

RANK SAB TTY SUPRES

```
0401|MTH|PN|N|
0400|MTH|MM|N|
0399|MSH|MH|N|
0398|MSH|TQ|N|
0397|MSH|EP|N|
0396|MSH|EN|N|
0395|MSH|XQ|N|
0394|MSH|NM|N|
0393|RXNORM|SCD|N|
0392|RXNORM|SCDC|N|
0391|DSM4|PT|N|
0390|DSM3R|PT|N|
0389|SNMI|PT|N|
0388|SNMI|PX|Y|
0387|SNMI|HT|N|
0386|SNMI|HX|Y|
0385|VANDF|CD|N|
0384|VANDF|HT|N|
0383|VANDF|IN|N|
0382|MDDB|CD|N|
0381|MMX|CD|N|
0380|MMX|IN|N|
0379|RCDSA|PT|N|
[...]
```



Appendix - Metathesaurus relational files (ORF)

181



MRREL Inter-concept Relationships

(2003AA)

```
CUI1 REL CUI2 RELA SAB SL MG
C0001403|AQ|C0348026||MSH|MSH||
C0001403|CHD|C0342477||RCD|RCD||
C0001403|CHD|C0546992||RCD|RCD||
C0001403|PAR|C0001621||PSY|PSY||
C0001403|PAR|C0001621||SNMI|SNMI||
C0001403|PAR|C0001623||MSH|MSH||
C0001403|PAR|C0935495|has_member|PSY|PSY||
C0001403|RB|C0001621||PSY|PSY||
C0001403|RB|C0001623||MTH|MTH||
C0001403|RB|C0004364||CSP|CSP||
C0001403|RB|C0004364||MTH|MTH||
C0001403|RL|C0405580|mapped_from|SNMI|SNMI||
C0001403|RN|C0518933||MTH|MTH||
C0001403|RN|C0518934||MTH|MTH||
C0001403|RO|C0152889|associated_with|SNMI|SNMI||
C0001403|RO|C0546992||MTH|MTH||
C0001403|RQ|C0020615|clinically_associated_with|CCPSS|CCPSS||
C0001403|RQ|C0151467|clinically_similar|RAM|RAM||
C0001403|RQ|C0300942|classifies|MDR|MDR||
C0001403|RQ|C0405580|mapped_from|CST|CST||
C0001403|RQ|C0405580|mapped_to|HLREL|HLREL||
C0001403|RQ|C0740740|inverse_isa|CCPSS|CCPSS||
C0001403|SIB|C0001206||MDR|MDR||
[...]
```



Appendix - Metathesaurus relational files (ORF)

182



MRCOC Co-occurrences

(2003AA)

```

CUI1      CUI2      SOC COT COF COA
C0001403|C0000727|MED|L|1|CO=1,DI=1,ME=1|
C0001403|C0000737|MED|L|1|CO=1,DI=1|
C0001403|C0000833|MED|L|2|MI=2,DT=1,RA=1|
C0001403|C0001175|MED|L|1|CO=1|
C0001403|C0001418|MED|L|1|ET=1|
C0001403|C0001430|MED|L|1|BL=1,CO=1|
C0001403|C0001551|MED|L|3|DT=3|
C0001403|C0001613|MED|L|6|ET=2,IM=2,CL=1,CN=1,DI=1,PA=1,PP=1|
C0001403|C0001613|MED|L|6|IM=4,PP=3,CO=2,BL=1,DI=1,TH=1|
C0001403|C0001614|MED|L|1|BL=1,CI=1|
C0001403|C0001617|MED|L|1|BL=1|
C0001403|C0001618|MED|L|2|BL=2,CO=1,ET=1|
C0001403|C0001618|MED|L|1|CO=1,PA=1|
[...]
C0018099|C0151373|AIR|KP|||
C0018099|C0151407|AIR|KP|||
C0018099|C0151463|CCPSS|PP|1||
C0018099|C0205082|CCPSS|MP|1||
C0018099|C0205090|CCPSS|MP|8||
C0018099|C0205091|CCPSS|MP|2||
C0018099|C0221598|AIR|KP|||
[...]
```



Appendix - Metathesaurus relational files (ORF)

183



MRCON Suppressible synonyms

(2003AA)

```

CUI      LAT TS      LUI      STT      SUI      STR      LRL
C0001403|ENG|P|L0001403|PF|S0010794|Addison's Disease|0|
C0001403|ENG|P|L0001403|VC|S0352253|ADDISON'S DISEASE|0|
C0001403|ENG|P|L0001403|VO|S0010792|Addison Disease|0|
C0001403|ENG|P|L0001403|VO|S0033587|Disease, Addison|0|
C0001403|ENG|P|L0001403|VO|S0469271|Addison's disease, NOS|3|
C0001403|ENG|S|L0278071|PF|S0352321|ADRENAL INSUFFICIENCY (ADDISON'S DISEASE)|0|
C0001403|ENG|S|L0278422|PF|S0352329|ADRENOCORTICAL INSUFFICIENCY, PRIMARY FAILURE|0|
C0001403|ENG|S|L0367999|PF|S0469267|Addison melanoderma|3|
C0001403|ENG|S|L0368000|PF|S0496840|Melasma addisonii|3|
C0001403|ENG|S|L0368398|PF|S0506528|Primary adrenal deficiency|3|
C0001403|ENG|S|L0373744|PF|S0471237|Asthenia pigmentosa|3|
C0001403|ENG|S|L0377831|PF|S0473611|Bronzed disease|3|
C0001403|ENG|S|L0494940|PF|S0718028|Primary adrenocortical insufficiency|3|
C0001403|ENG|S|L0494937|PF|S0718027|Primary adrenocortical insuff|3|
C0001403|FIN|S|L1510041|PF|S1805950|Addisonin tauti|3|
C0001403|FRE|S|L1272481|PF|S1514427|MALADIE D'ADDISON|2|
C0001403|GER|P|L1229627|PF|S1471573|Addison-Krankheit|3|
C0001403|GER|S|L1288823|PF|S1530769|Primäre Nebennierenrindeninsuffizienz|1|
C0001403|ITA|P|L1276837|PF|S1518783|Morbo di Addison|3|
C0001403|POR|P|L0324623|PF|S0432928|DOENÇA DE ADDISON|2|
C0001403|RUS|P|L0889403|PF|S1093220|ADDISONOVA BOLEZN'|3|
C0001403|SPA|P|L0342625|PF|S0450930|ENFERMEDAD DE ADDISON|3|
[...]
```



Appendix - Metathesaurus relational files (ORF)

184



MRCUI Concept history

(2003AA)

```

CUI1      VER      CREL  CUI2  MAPIN
C0241779|1996AA|SY|C0001403|Y|
C0271735|1996AA|SY|C0001403|Y|
[...]
```



Appendix - Metathesaurus relational files (ORF)

185



MRSAB Source information

(2003AA)

```

VCUI      RCUI      VSAB      RSAB SON SF SVER MSTART MEND IMETA RMETA SLC SCC SRL TFR
C1140103|C1140104|INS2002|INS|French translation of the Medical Subject Headings,
2002|MSH|2002|2002_04_11||2002AB||Dr. Annie Advocat; e-mail: advocat@inserm-
dicdoc.u-strasbg.fr|Dr. Annie Advocat; e-mail: advocat@inserm-dicdoc.u-
strasbg.fr|3|30883|20692||MH,SY||FRE|ISO646-US|Y|Y|

C1140132|C1140133|BRMP2002|BRMP|Portuguese translation of the Medical Subject
Headings, 2002|MSH|2002|2001_12_04||2002AA||Elenice de Castro; e-mail:
elenice@brm.bireme.br|Elenice de Castro; e-mail:
elenice@brm.bireme.br|3|41853|27195||EP,MH,SY||POR|ISO646-US|Y|Y|

C1140297|C1140298|DUT2001|DUT|Dutch Translation of the Medical Subject Headings,
2001|MSH|2001|2001_12_04||2002AB||A.J.P.M.Overbeke, overbeke@ntvg.nl, * 20 662
0150|A.J.P.M.Overbeke, overbeke@ntvg.nl, * 20 662
0150|3|35705|17733||EP,MH,SY||DUT|ISO646-US|Y|Y|

C1142630|C1135584|MSH2003_2002_10_24|MSH|Medical Subject Headings,
2002_10_24|MSH|2003_2002_10_24|2002_11_05||2003AA||Stuart Nelson, M.D., Head, MeSH
Section; e-mail: nelson@nlm.nih.gov|Stuart Nelson, M.D., Head, MeSH Section; e-
mail: nelson@nlm.nih.gov|0|516015|231458|FULL-
MULTIPLE|CE,EN,EP,HS,HT,MH,NL,NM,PM,TQ,XQ|AN,AQL,CX,DC,DID,DQ,DS,DX,EC,EV,FR,FX,HM
,HN,II,LT,MDA,MMR,MN,MUI,OL,PA,PI,PM,QA,QE,QS,RN,RR,SOS,SR,TH|ENG|ISO646-US|Y|Y|
```



Appendix - Metathesaurus relational files (ORF)

186



SRDEF Basic information

(2003AA)

```

RT   TUI   STY/RL   STN/RTN   DEF       EX       UN       NH       ABR       RIN
STY|T001|Organism|A1.1|Generally, a living individual, including all plants and
animals.|Homozygote; Radiation Chimera; Sporocyst|
STY|T002|Plant|A1.1.1|An organism having cellulose cell walls, growing by
synthesis of inorganic substances, generally distinguished by the presence of
chlorophyll, and lacking the power of locomotion. Plant parts are included here
as well.|Pollen; Potatoes; Vegetables|
STY|T003|Alga|A1.1.1.1|A chiefly aquatic plant that contains chlorophyll, but does
not form embryos during development and lacks vascular tissue.|Chlorella;
Laminaria; Seaweed|
STY|T004|Fungus|A1.1.2|A eukaryotic organism characterized by the absence of
chlorophyll and the presence of a rigid cell wall. Included here are both slime
molds and true fungi such as yeasts, molds, mildews, and mushrooms.|Aspergillus
clavatus; Blastomyces; Helminthosporium; Neurospora|
[... ]
RL|T132|physically_related_to|RI|Related by virtue of some physical attribute or
characteristic.|
PR|physically_related_to|
RL|T133|part_of|RI.1|Composes, with one or more other physical units, some larger
whole. This includes component of, division of, portion of, fragment of, section
of, and layer of.|
PT|has_part|
[... ]
RL|T186|isa|H|The basic hierarchical link in the Network. If one item "isa"
another item then the first item is more specific in meaning than the second
item.|
IS|inverse_isa|
[... ]

```



Appendix - Semantic Network relational files (ORF)

187



SRSTR Structure

(2003AA)

```

STY/RL       RL       STY/RL       LS
Biologic Function|affects|Organism|D|
Biologic Function|isa|Natural Phenomenon or Process|D|
Biologic Function|process_of|Organism|D|
Biologic Function|produces|Biologically Active Substance|D|
Biologic Function|produces|Body Substance|D|
[... ]
Disease or Syndrome|conceptually_related_to|Experimental Model of Disease|DNI|
Disease or Syndrome|isa|Pathologic Function|D|
Disease or Syndrome|produces|Tissue|D|
[... ]
Medical Device|isa|Manufactured Object|D|
Medical Device|prevents|Injury or Poisoning|D|
Medical Device|prevents|Pathologic Function|D|
Medical Device|treats|Anatomical Abnormality|D|
Medical Device|treats|Injury or Poisoning|D|
Medical Device|treats|Pathologic Function|D|
Medical Device|treats|Sign or Symptom|D|
[... ]
Mental Process|process_of|Plant|B| blocks Biologic Function|process_of|Organism|D|
[... ]
part_of|isa|physically_related_to|D|
[... ]

```



Appendix - Semantic Network relational files (ORF)

188



SRSTRE2 Structure (expanded)

(2003AA)

STY	RL	STY
Disease or Syndrome	isa	Pathologic Function
Disease or Syndrome	isa	Biologic Function
Disease or Syndrome	isa	Natural Phen. or Pr.
Disease or Syndrome	isa	Phenomenon or Process
Disease or Syndrome	isa	Event
Disease or Syndrome	affects	Alga
Disease or Syndrome	affects	Amphibian
Disease or Syndrome	affects	Animal
Disease or Syndrome	affects	Archaeon
Disease or Syndrome	affects	Bacterium
Disease or Syndrome	affects	Biologic Function
Disease or Syndrome	affects	Bird
Disease or Syndrome	affects	Cell Function
Disease or Syndrome	affects	Cell or Molecular Dysfunction
[...]		

from Biologic Function|affects|Organism|D|

